

Keeping the North Shore Hospital community informed about developments relating to Tōtara Haumaru, the new four-storey, state-of-the-art hospital facility due for completion in 2023 and opening 2024.

### What's happening on-site?

The concrete pours of the floor slabs for all levels, including the roof, have now been completed. Like the lower floors, the concrete pours for levels three and four cover approximately 1000 square metres and require over 30 concrete trucks each. The concrete is pumped up to each level through a large truck-mounted pump and then finished by hand.

Installation has started on the pre-cast concrete panel facade with the aim to have the building fully enclosed by mid-November - a major milestone!



*Our teams made the most of some sunny weather to progress the final stage of the concrete pours.*

### Site snapshot

Person hours: 20,970 last month, 321,430 in total to-date

On-site labour force: Approximately 170 people

### The Sky Bridge extension is up!

Those with eyes on the site will have noted an exciting development, with the Sky Bridge extension taking shape over the past month.

The external steel framing now joins Tōtara Haumaru with the Elective Surgery Centre (ESC) and will eventually provide a seamless connection for staff and the transfer of patients from the new four-level hospital building through the ESC and on to the main hospital tower block.

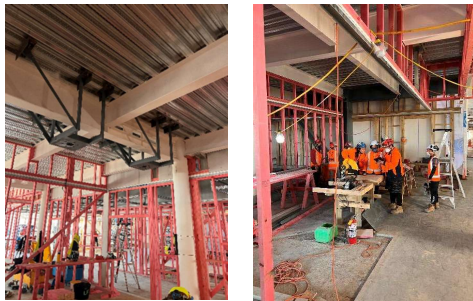
The Sky Bridge is part of plans to further integrate and expand services on the North Shore Hospital campus.



*Sky Bridge extension linking Tōtara Haumaru with the Elective Surgery Centre.*

## Operating theatres start to take shape

Timber framing is going in and walls are popping up on the ground floor and levels one and two of the building's interior.



*Structural steel being installed in the ceiling of an operating theatre to hold surgical pendants which provide streamlined access to medical equipment and gases.*

Work is now underway to determine the furniture, fittings and equipment for the theatres and wards.

## Meet the team - Joe Burke

This month, we caught up with Joe Burke, our site manager from Hawkins in charge of building fit-out.



"I've been in my role for two years and coordinate the different sub-contractors each day to make sure the project stays on-track.

This involves spending time on-site with each foreman and helping to resolve any issues they have to keep everyone moving forward. It's a unique and challenging project and I enjoy working on it because of the difference it will make to the community once complete.

Off the construction site, I enjoy going out for bike rides on the weekends and keeping up with the latest F1 races."

## Progress from above

Take a look at the site in January and in October to see Tōtara Haumaru take shape. Huge progress in nine months!



January 2022



October 2022

## Hours of work

Typically, work occurs between the hours of 7am and 6pm, Monday-to-Saturday.

If an occasion arises where we need to work outside of these hours, advance notification will be provided.