

Demographic Profile for Waitemata DHB

An Analysis of the 2006 Census



May 2007
By Dr. Ratana A Walker
& Sam Martin



Waitemata
District Health Board

Te Wai Awhina

Contents

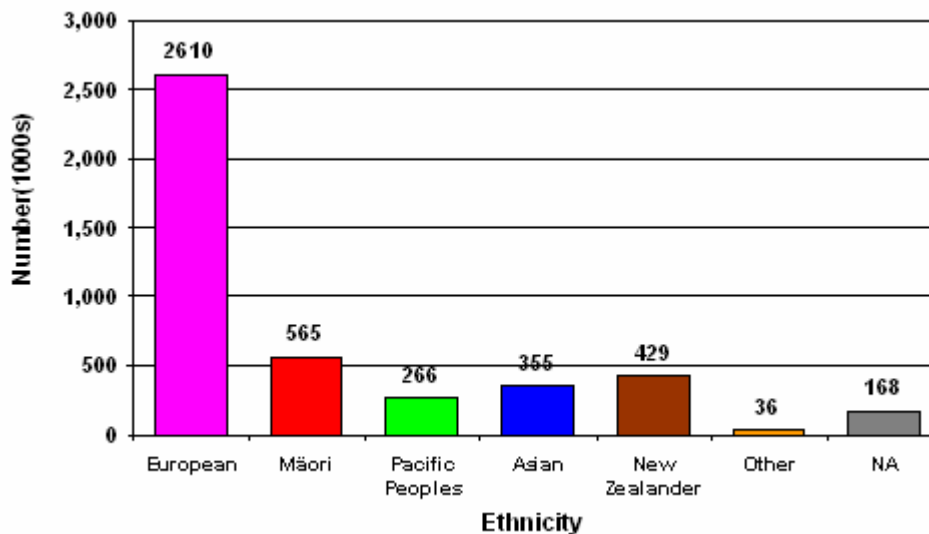
1.0	Population in New Zealand, 2006	3
1.1	Population in New Zealand	3
1.2	Who were the “New Zealanders”?	3
1.3	Population of New Zealand by Ethnic Group	5
1.4	Population in Waitemata District Health Board (WDHB)	6
1.5	Population by Ethnic Group	6
1.6	Maori Population in Waitemata DHB	8
1.7	Pacific Population in Waitemata DHB	9
1.8	Asian Population in Waitemata DHB	11
1.9	Children in Waitemata DHB	13
1.10	Elderly Population in Waitemata DHB	14
1.11	Age Structure of the Population by Ethnicity	15
1.12	Live Births	17
1.13	Live Births by Ethnicity	17
1.14	Life Expectancy at Birth	18
2.0	Population Change for Waitemata DHB between 2001 and 2006.....	20
2.1	Population Change	20
2.2	Population Change by Age Group	20
2.3	Population Change Among Older People	22
2.4	Population Change Among Children	22
2.5	Population Change by Ethnicity	22
3.0	Socio-Economic Status of People in Waitemata DHB, 2006	23
	Appendix A: 2006 Census for New Zealand.....	31
	Appendix B: Population by DHB, 1996-2006	33
	Appendix C: 2006 Census for Waitemata DHB	34
	Appendix D: 2006 Census for Waitemata DHB by TLA	36
	Appendix E: Socio-Economic Status of People in Rodney District, 2006	42
	Appendix F: Socio-Economic Status of People in North Shore City, 2006.....	44
	Appendix G: Socio-Economic Status of People in Waitakere City, 2006	46

1.0 Population in New Zealand, 2006

1.1 Population in New Zealand

At the 2006 Census, there were 4,027,944 people who usually lived in New Zealand. In looking at the results of the Census, it is important to note that Statistics New Zealand introduced the new ethnicity grouping “New Zealander” in 2006. It is also important to realise that in responding to the ethnicity question, individuals could choose to affiliate themselves with more than one ethnic group. Figure 1 shows the number of responses by ethnic group from the 2006 Census. Of the 4,428,888 responses to the ethnicity question, 429,432 or 9.7% of them were responses where individuals chose to identify themselves as a “New Zealander”.

**Figure 1: Number of Responses by Ethnic Group
New Zealand, 2006**



1.2 Who were the “New Zealanders”?

Out of the 429,432 “New Zealander” responses, 87.1% were from individuals who identified “New Zealander” as their sole ethnic group. 9.8% identified themselves also as European and 1.4% identified themselves also as Maori (See Table 1 below).

**Table 1: Number of Responses for “New Zealander”
New Zealand, 2006**

Ethnic Group	Number	%
New Zealander Only	374,061	87.1%
NZ + European	41,967	9.8%
NZ + Maori	5,988	1.4%
NZ + Asian	4,383	1.0%
NZ + Pacific	2,349	0.5%
NZ + Other	678	0.2%
Total NZ Responses	429,432	100.0%

Of those respondents who said that they were a “New Zealander”, 93% of them were born in New Zealand and 2.6% of them were born in the UK or Ireland (See Table 2).

**Table 2: “New Zealander” by Country of Birth
New Zealand, 2006**

Birthplace	Number	%
New Zealand	401,142	93.4%
UK and Ireland	11,007	2.6%
Australia	3,186	0.7%
Asia	2,475	0.6%
Other	2,475	0.6%
Europe (excl. UK and Ireland)	2,097	0.5%
North America	1,440	0.3%
Pacific Islands	1,200	0.3%
No response	4,407	1.0%
Total	429,432	100.0%

Below is the population pyramid for the “New Zealander” ethnic group. 52% of them were Male and close to half of this group were aged 40 years or older.

**Figure 2: Age Structure of “New Zealanders”
New Zealand, 2006**

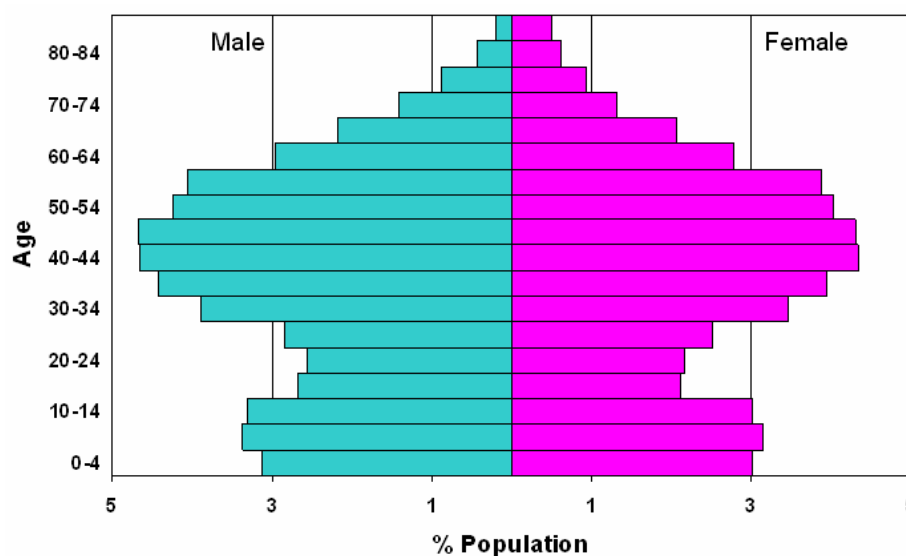


Table 3 shows percentage comparisons of the “New Zealander” group by socioeconomic indicators with European responses and New Zealand as a whole. The results indicate clearly that “New Zealanders” were much better off, having a higher socioeconomic status on average, than both the total New Zealand population and European respondents.

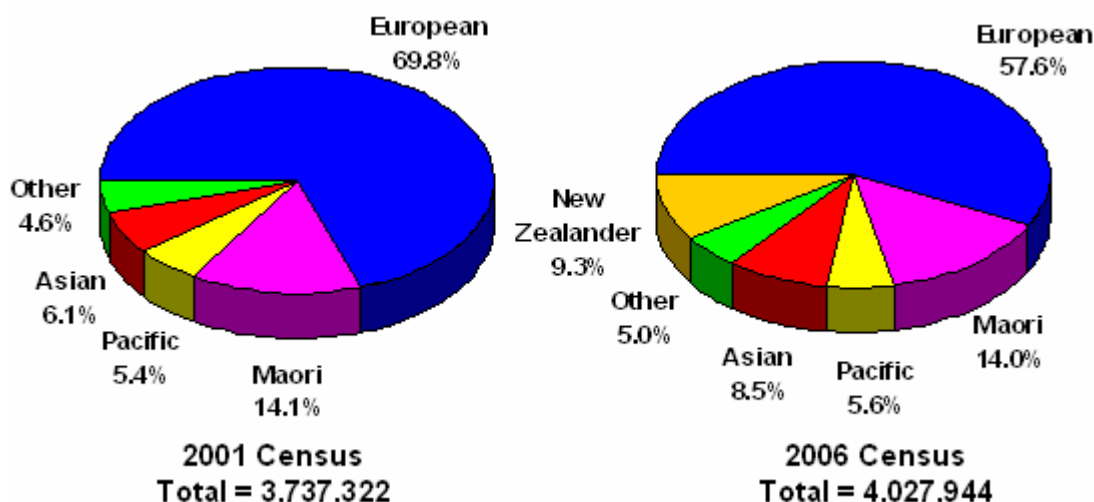
**Table 3: Socio Economic Indicators, New Zealand, 2006
New Zealander vs. European**

Socio Economic Indicators	Total NZ	Total European Responses	Total "New Zealander" Responses
% Bachelor Degree	14.2%	14.6%	15.5%
% No Qualification	22.4%	23.2%	18.9%
% Unemployed	3.4%	2.8%	2.1%
% On Income Support	20.6%	15.0%	11.7%
% Personal Income \$30,000+	37.3%	40.9%	49.6%
% On DPB	2.9%	2.7%	1.7%

1.3 Population of New Zealand by Ethnic Group

According to the New Zealand Health Strategy, Maori and Pacific people have been given the highest priority due to their relatively poor health status. For this reason, an analysis of population numbers by ethnicity is important. The ethnic make-up of the population plays a role in determining the allocation of health funding as well as the mix and delivery of health services. In the Census, a person is allowed to choose more than one ethnic group. As a result, the sum of the total responses by ethnicity is greater than the actual number of people. In order to plan for health services, it is important then to use the number of people rather than the total number of responses; one person should be counted only once. The conventional method of prioritising groups is used in most parts of this report. The usual ranking of ethnic groups for the purposes of prioritisation is the following: Maori first, then Pacific people, Asian, Others and finally European. Because this is the first time in the history of the Census that a separate "New Zealander" group has been present, and because the number for this group is substantial, it deserves its own category. Figure 3 shows percentages of the population by ethnic group using the prioritised definition compared with the 2001 Census. 14% of the population in 2006 were Maori, 8.5% were Asian, and 5.6% were Pacific People. "New Zealander" became the third largest group, making up 9.3% of the population. The numbers of population by age group and by gender are shown in Appendix A.

Figure 3: Population by Ethnic Group in New Zealand, 2006

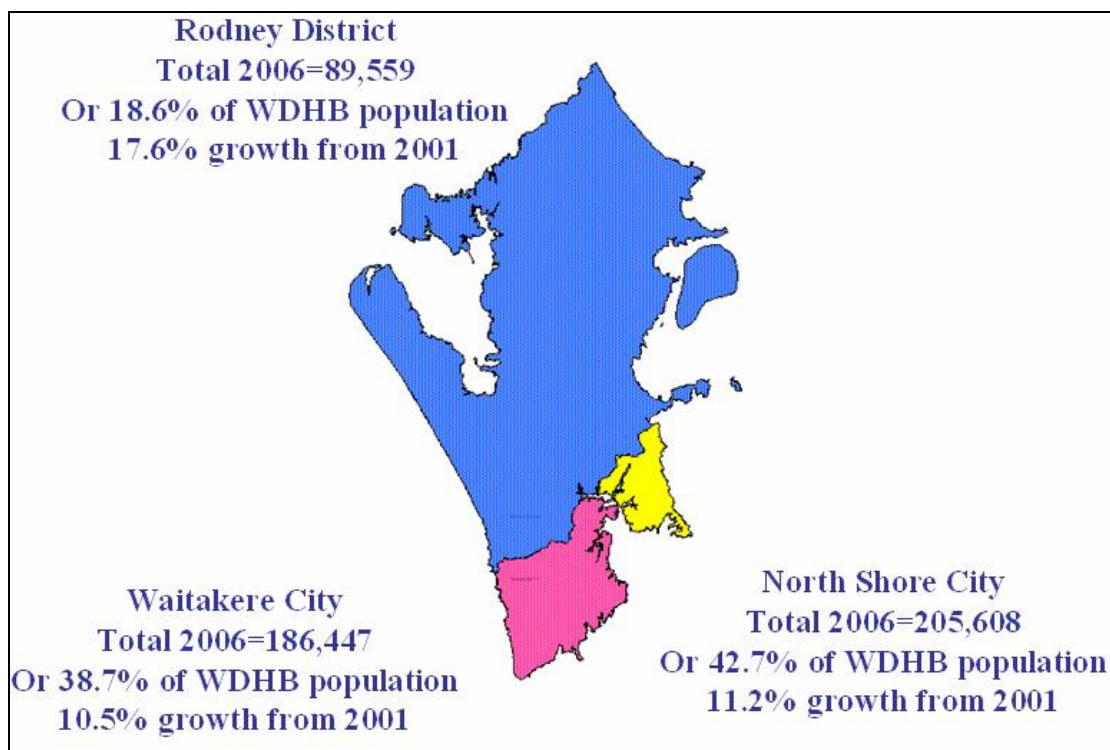


1.4 Population in Waitemata District Health Board (WDHB)

The Waitemata District Health Board (WDHB) is the largest DHB in the country. In 2006 the region had a population of 481,611, making up 12% of the total population of New Zealand (as at 7 March 2006). The details of the number and percentages of population by DHB in the whole country are shown in Appendix B.

WDHB is made up of three Territorial Local Authorities (TLAs): North Shore City, Waitakere City, and Rodney District. Of the population making up the WDHB region, 42.7% lived in North Shore City, 38.7% lived in Waitakere, and the remaining 18.6% lived in Rodney. The numbers of population by age, gender and ethnicity for Waitemata DHB and for all three TLAs are provided in Appendices C and D.

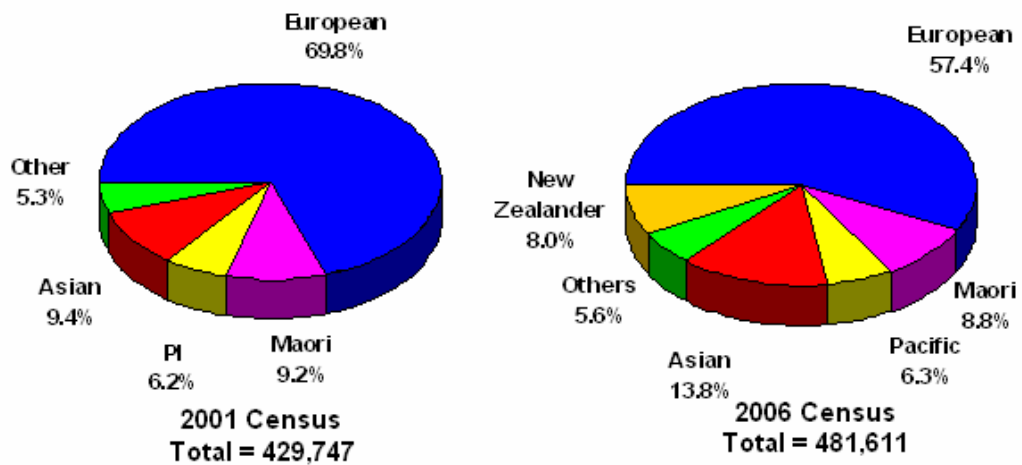
The map below shows the population by TLA in WDHB. Rodney District experienced the fastest growth between 2001 and 2006 with population growth of 17.6%.



1.5 Population by Ethnic Group

Figure 4 shows the breakdown of the population by ethnic group in WDHB. Asian became the second largest group in WDHB. Maori made up 8.8% of the population and were the third largest group. 8% of people in WDHB reported themselves as “New Zealanders”, Pacific people made up 6.3% and the remaining 5.6% were “Others”. Note that “Others” also includes those that did not specify their ethnicity.

Figure 4: Population by Ethnic Group in Waitemata DHB, 2001 & 2006



Note: These are numbers of people based on the prioritised definition of ethnicity.

Figures 5-7 show the percentages of population by ethnicity for 2001 and 2006 for the three TLAs in Waitemata DHB. For Rodney District, the majority of the population were European (72.2%). About 40% of people on the North Shore were Non-European and almost one quarter of the North Shore population were Asian.

Figure 5: Population by Ethnic Group, Rodney District, 2006

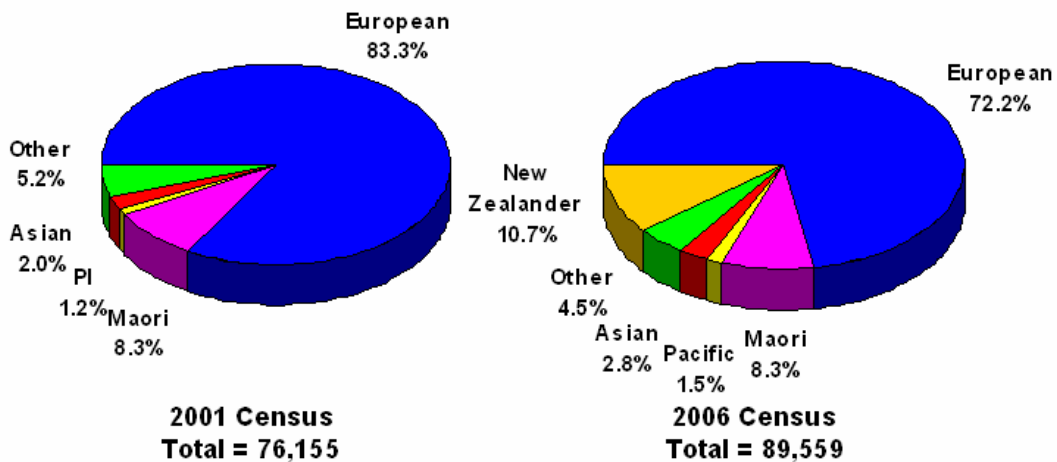
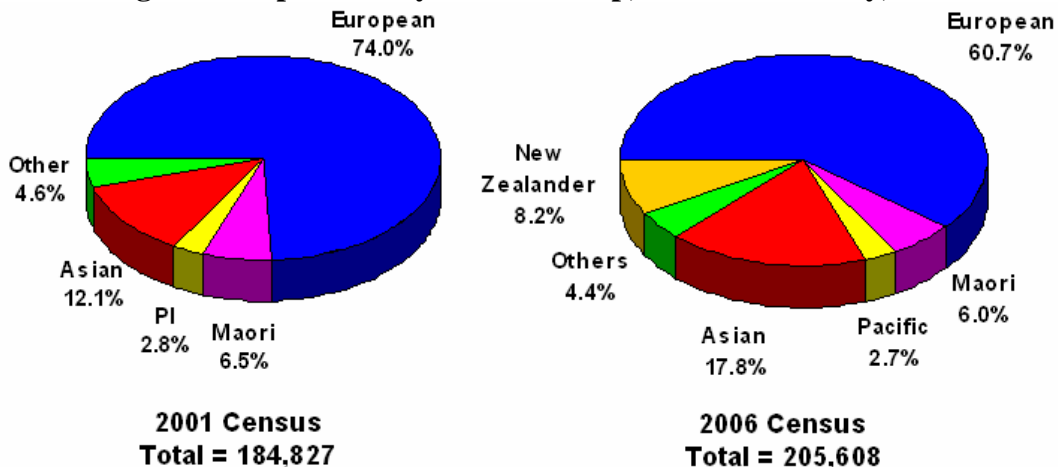
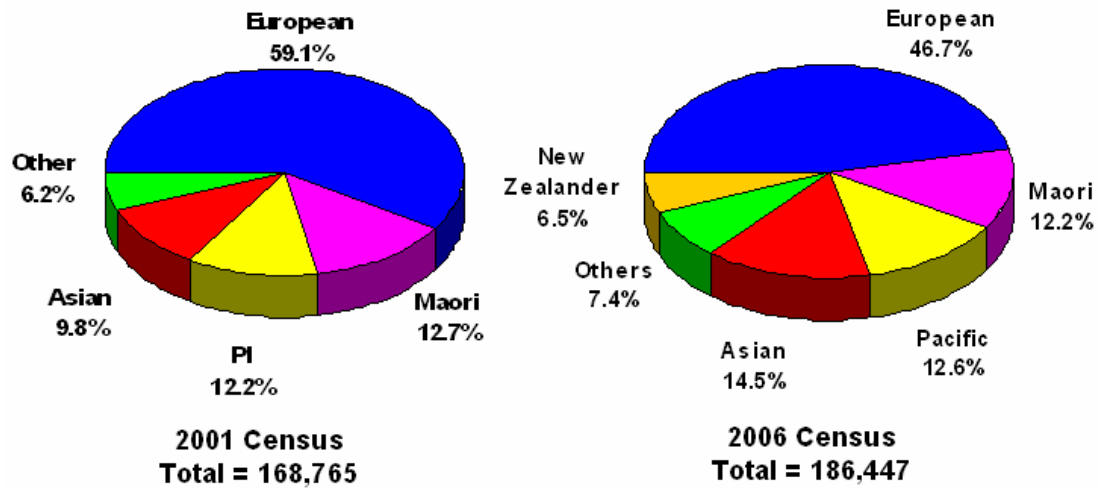


Figure 6: Population by Ethnic Group, North Shore City, 2006



About half of the population in Waitakere City were Non-European. Of this group, Asian was the largest group, followed by Pacific people and Maori.

Figure 7: Population by Ethnic Group, Waitakere City, 2006



1.6 Maori Population in Waitemata DHB

There were approximately 42,603 Maori living in WDHB in 2006. Most of them lived in Waitakere City.

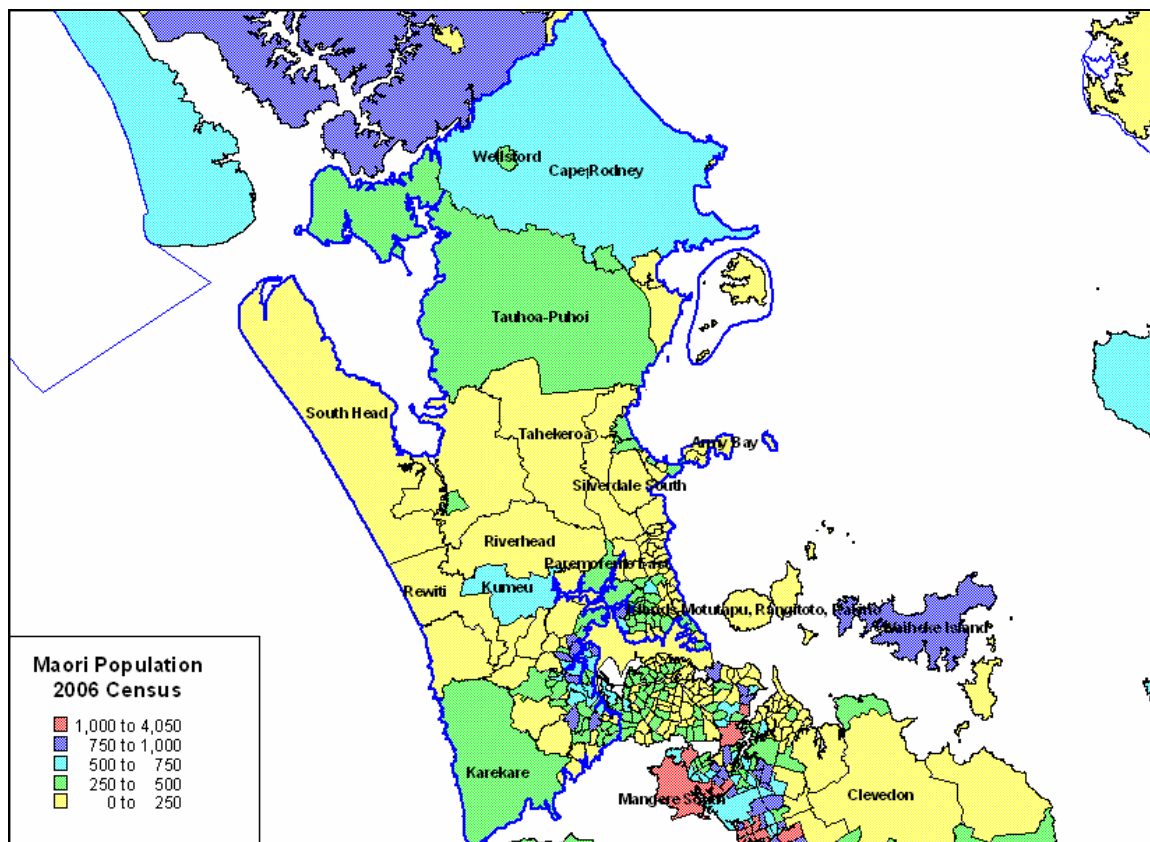


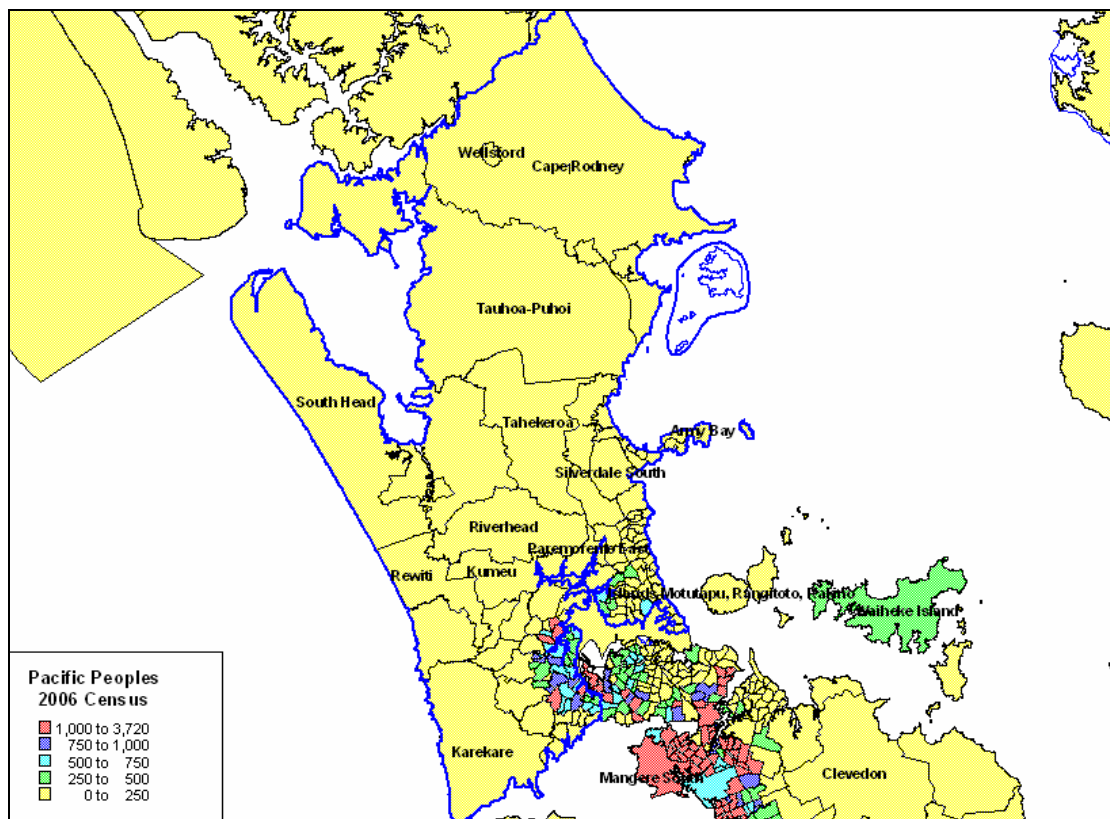
Table 4 shows the number and percentages of Maori by TLA in WDHB. Waitakere City had the highest number with 22,689 Maori. This number made up 4.0% of Maori in New Zealand. Rodney had the lowest number of Maori in WDHB.

Table 4: Number of Maori Population by TLA, Waitemata DHB, 2006

Territorial Authority	Total Maori	% NZ Population
Waitakere City	22,689	4.0%
North Shore City	12,423	2.2%
Rodney District	7,422	1.3%
Total WDHB	42,603	7.6%

1.7 Pacific Population in Waitemata DHB

There were 30,378 Pacific People living in Waitemata DHB in 2006 with most of them living in Waitakere City (See maps below).



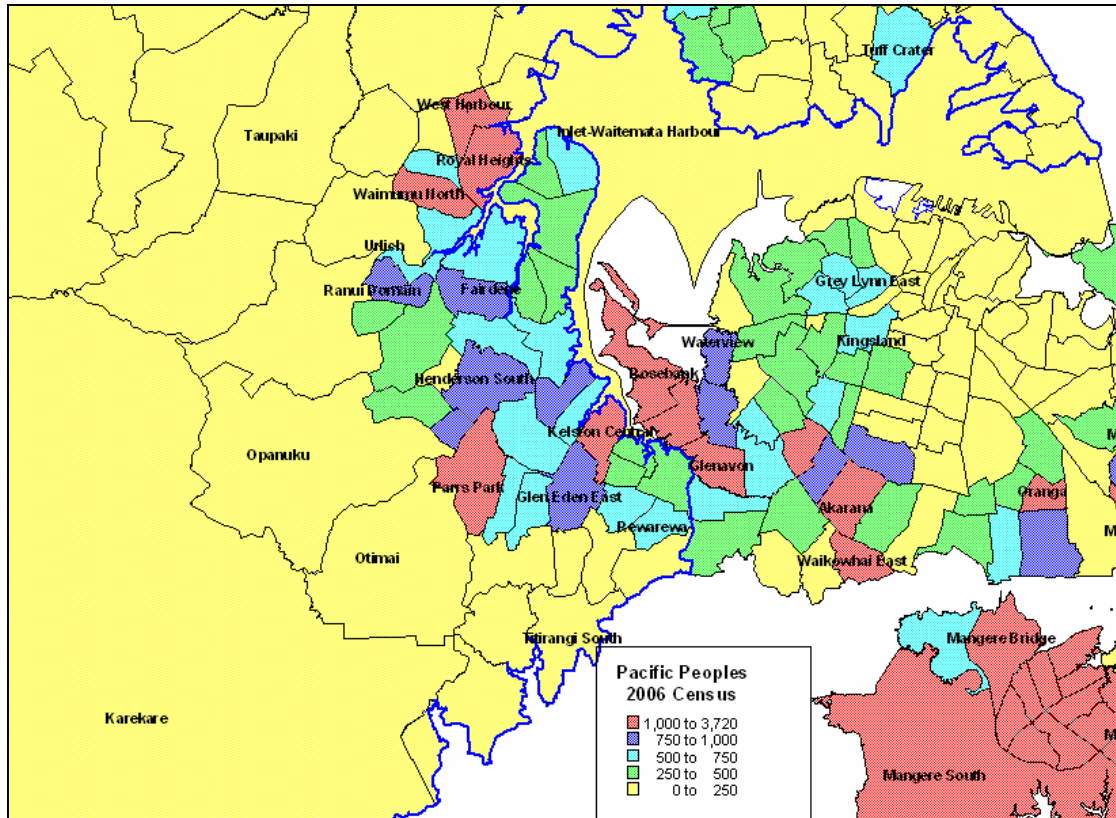


Table 5 shows the number of people identifying with different cultural groups among Pacific people in the WDHB region. Note that the sum of this table does not equal the total number of people but rather the number of affiliations recorded. This is due to the fact that people can choose to affiliate themselves with more than one group. Among Pacific people, Samoan was the largest cultural group identified followed by Tongan and Cook Island Maori.

Table 5: Number of Pacific Population by Culture Group, Waitemata DHB, 2006

Culture Group	Number	%
Samoan	18,588	48.6%
Tongan	5,736	15.0%
Cook Island Maori	5,403	14.1%
Niuean	3,417	8.9%
Fijian	2,001	5.2%
Tokelauan	579	1.5%
Other Pacific Peoples	2,553	6.7%
Total Responses	38,277	100.0%

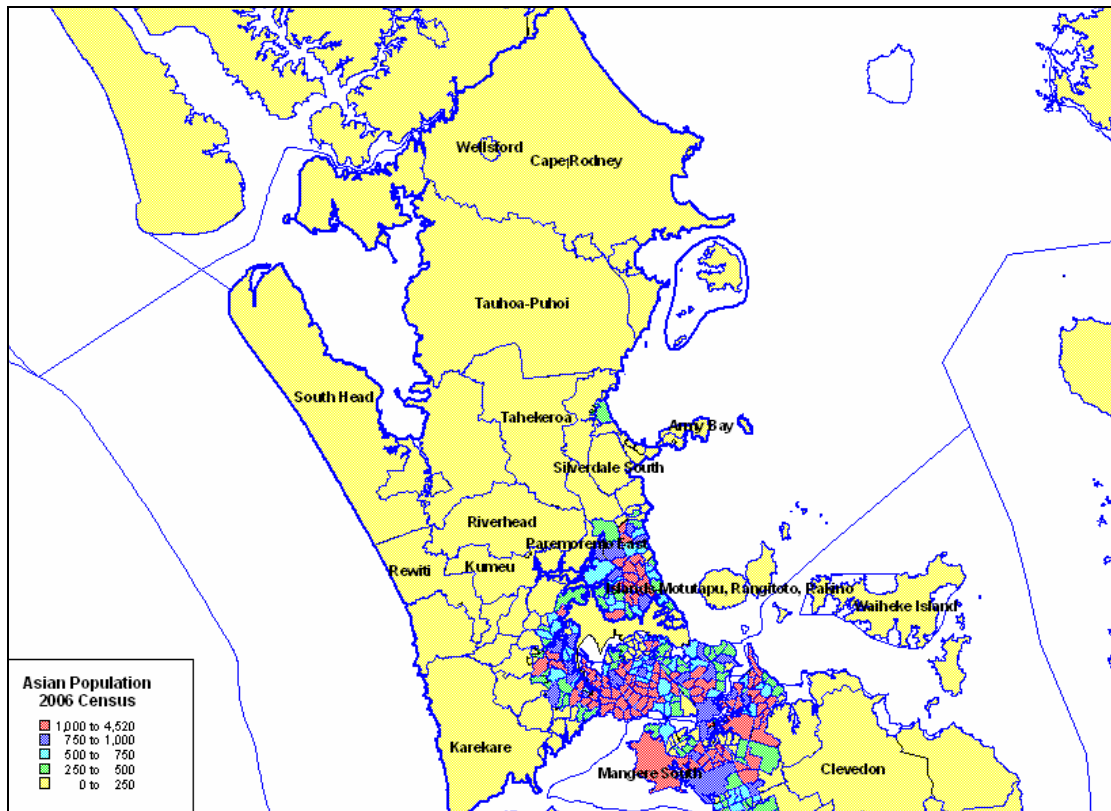
Table 6 shows the number of Pacific people by TLA in WDHB. Waitakere City had the highest number with 23,532 Pacific people. This number made up 10.4% of the total Pacific population in the country. Rodney District had the lowest number of Pacific people in WDHB.

Table 6: Number of Pacific Population by TLA, Waitemata DHB, 2006

Territorial Authority	Total Pacific	% NZ Population
Waitakere City	23,532	10.4%
North Shore City	5,562	2.5%
Rodney District	1,317	0.6%
Total WDHB	30,378	13.4%

1.8 Asian Population in Waitemata DHB

There were 66,255 Asian people living in the WDHB region. More than half of them lived in North Shore City (See maps below).



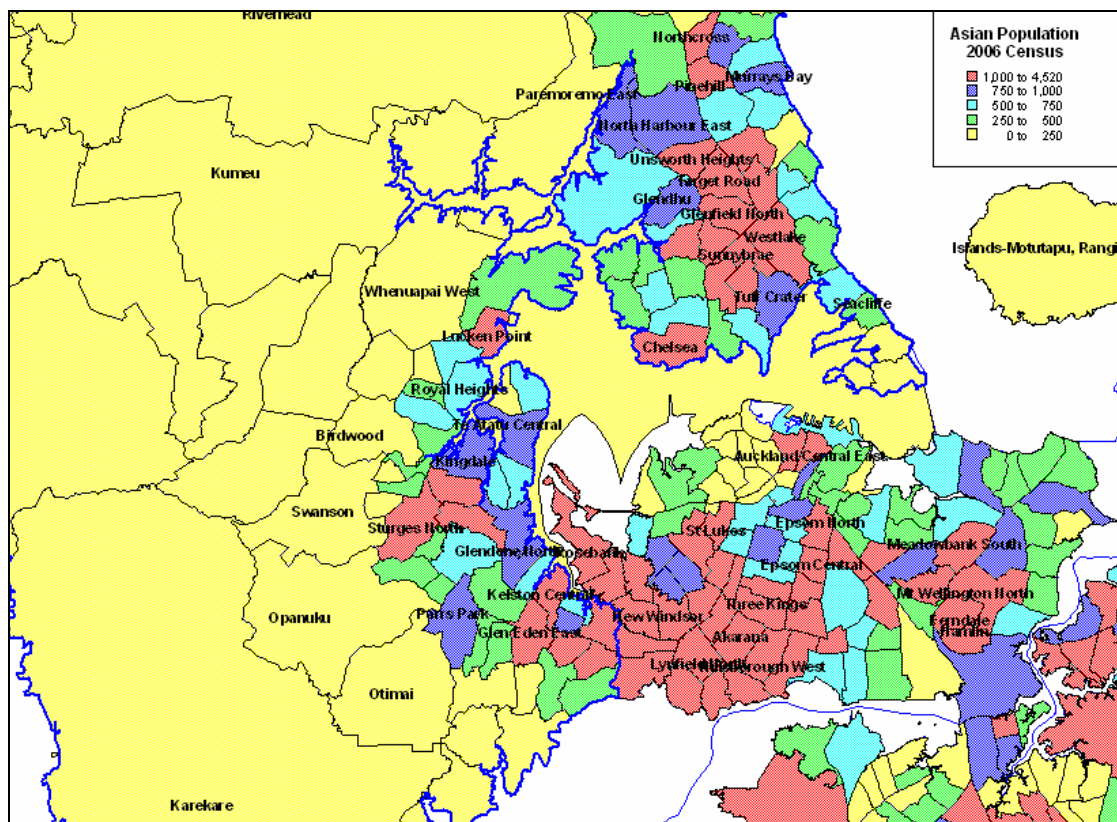


Table 7 shows the number of people identifying with different cultural groups among Asian people in the WDHB region. Note that the sum of this table is not the total number of people but is the number of affiliations recorded as people can choose to affiliate with more than one group. The largest group identified was Chinese followed by Indian and Korean.

Table 7: Number of Asian Population by Culture Group, Waitemata DHB, 2006

Culture Group	Number	%
Chinese	27,330	39.6%
Indian	15,015	21.8%
Korean	12,210	17.7%
Filipino	4,941	7.2%
Japanese	1,827	2.7%
Sri Lankan	870	1.3%
Cambodian	810	1.2%
Vietnamese	267	0.4%
Other Asian	5,661	82.0%
Total Responses	68,931	100.0%

Table 8 shows the number of people who identified themselves as Asian by TLA in WDHB. North Shore City had the largest number with 36,681 Asians. This number made up 10.8% of the total Asian population in New Zealand. In total, 19.4% of all the Asian population in the country lived in the WDHB region.

Table 8: Number of Asian Population by TLA, Waitemata DHB, 2006

Territorial Authority	Total Asian	% NZ Population
Waitakere City	27,075	7.9%
North Shore City	36,681	10.8%
Rodney District	2,499	0.7%
Total WDHB	66,255	19.4%

1.9 Children in Waitemata DHB

Figures 8 and 9 show the ethnic make-up of the child population in WDHB and the three TLAs. Children are defined as being under the age of 15. In 2006 Waitakere clearly had the largest proportion of Non-European children in its population; approximately half of the child population of Waitakere were Maori, Pacific, or Asian.

Figure 8: Child Population by Ethnic Group in Waitemata DHB, 2001 & 2006

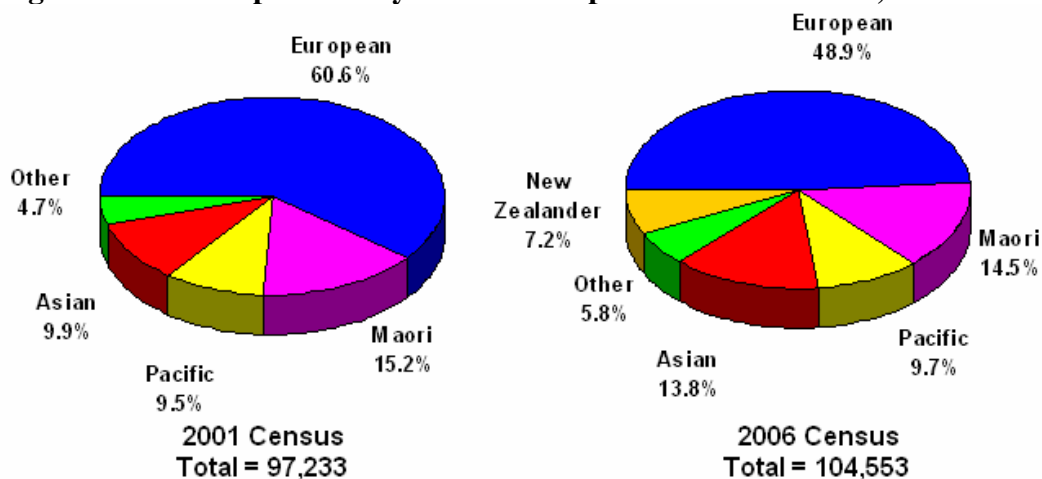
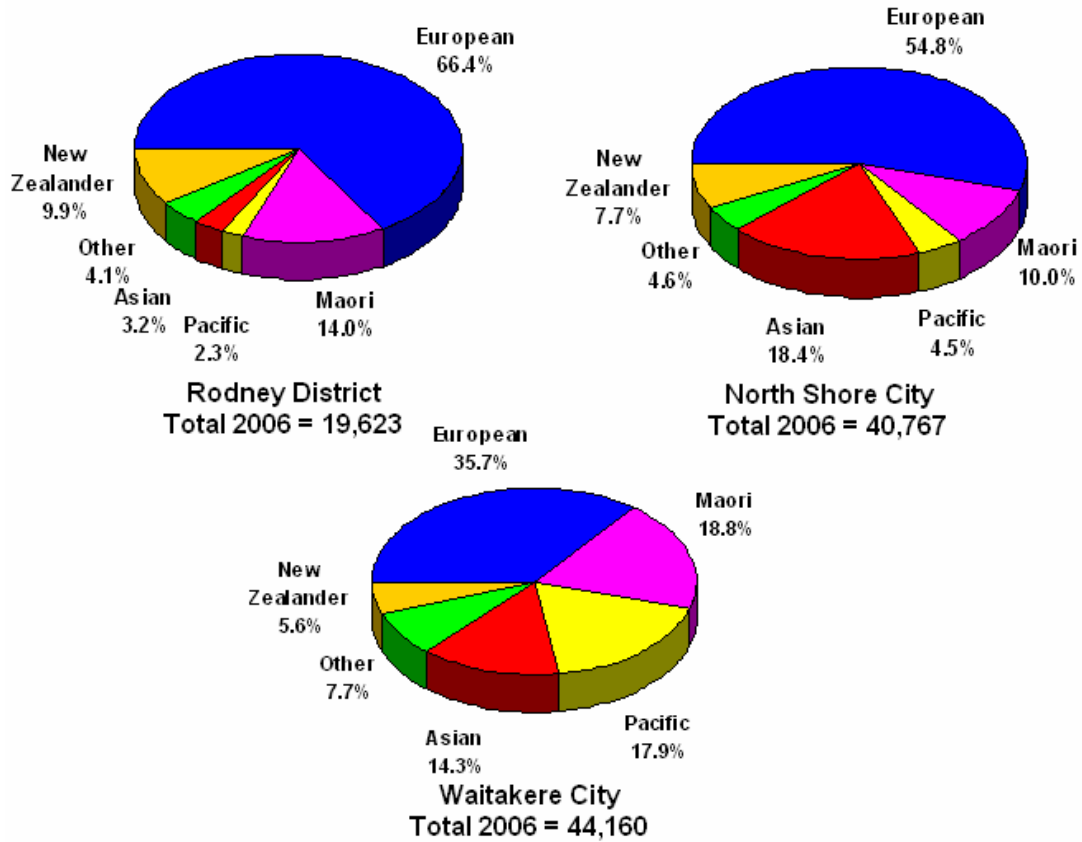


Figure 9: Child Population by Ethnic Group by TLA, Waitemata DHB, 2006



Note: These are numbers of people based on the prioritised definition of ethnicity.

1.10 Elderly Population in Waitemata DHB

Figures 10 and 11 show the ethnic make-up of the elderly population in the WDHB region and the three TLAs. The elderly age-group includes all those in the population who are 65 years of age or older. The ethnic make-up of the elderly population provides a clear contrast with that of the child population as previously shown, showing evidence of the changes occurring in the population make-up of WDHB.

Figure 10: Elderly Population by Ethnic Group in Waitemata DHB, 2001 & 2006

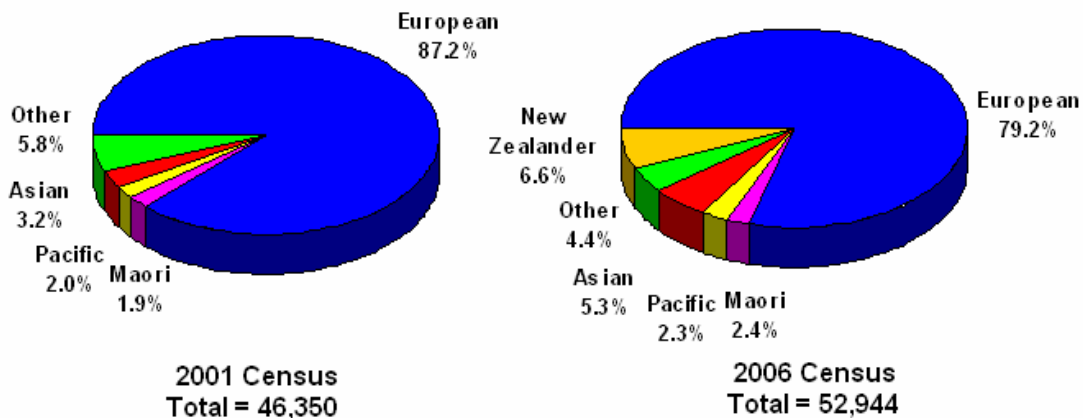
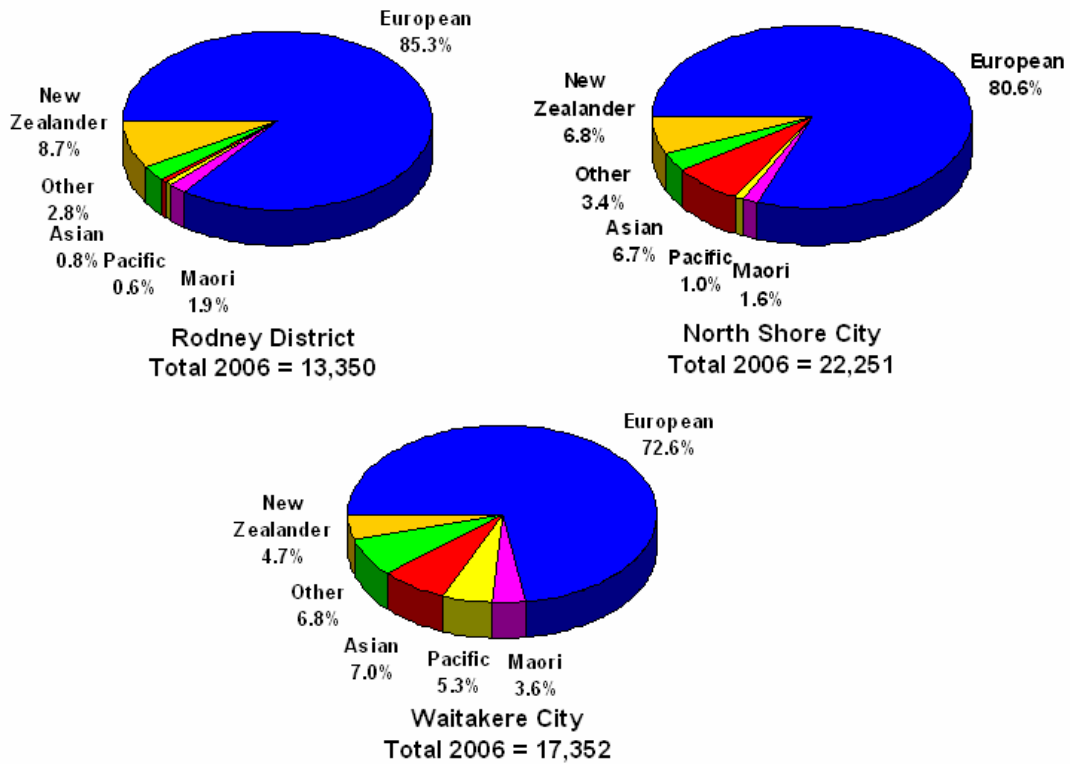


Figure 11: Elderly Population by Ethnic Group by TLA, Waitemata DHB, 2006

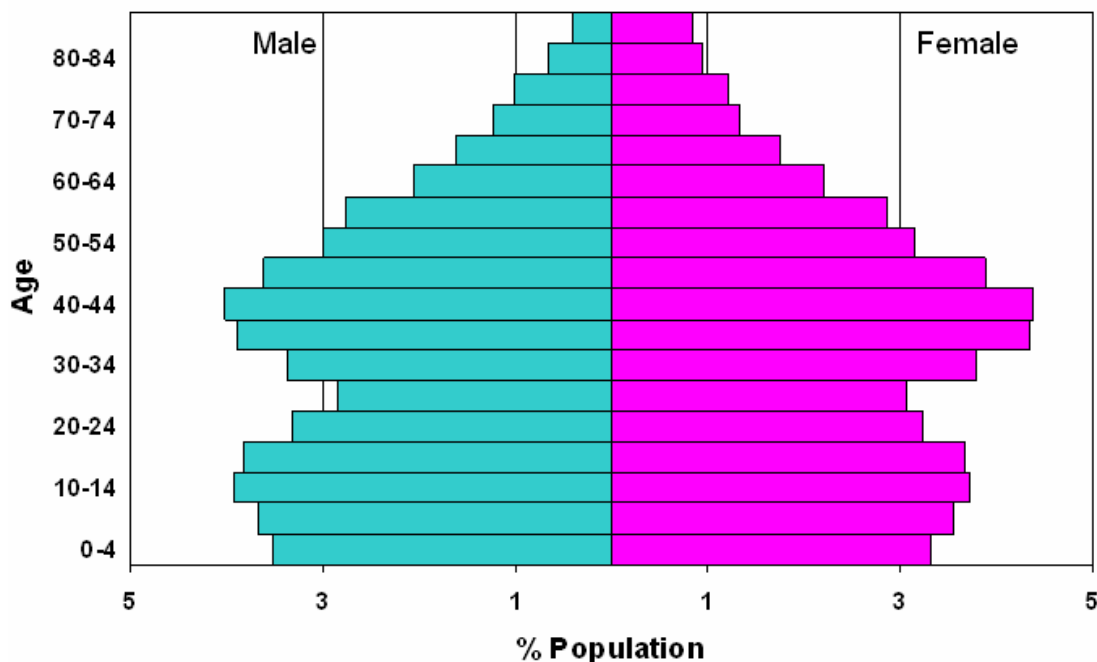


Note: These are numbers of people based on the prioritised definition of ethnicity.

1.11 Age Structure of the Population by Ethnicity

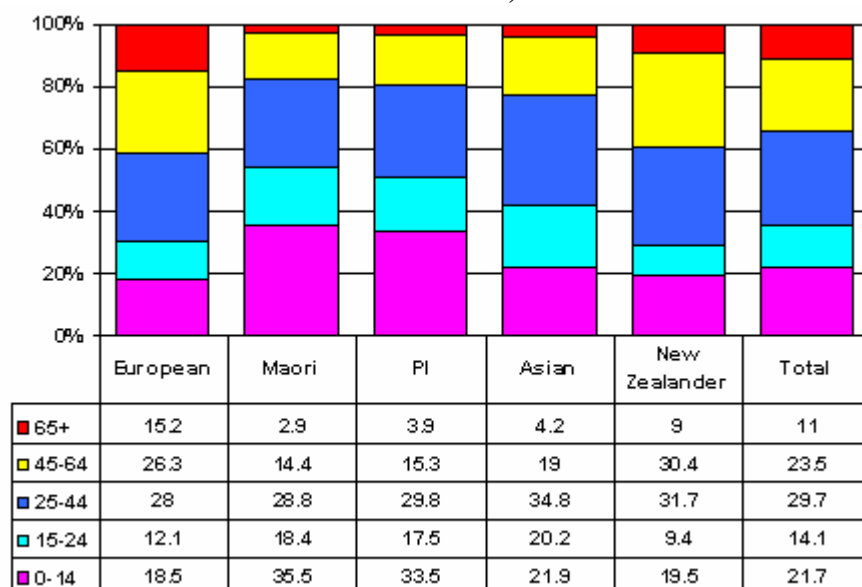
Figure 12 shows the age structure of the population in the WDHB region. About 35% of the population were under the age of 25 while around 11% were 65 years and older.

Figure 12: Age Structure of the Population in Waitemata DHB, 2006



When broken down by ethnicity, Figure 13 shows that Maori and Pacific Island people had proportionately younger populations. Close to half of the Maori and Pacific populations were aged between 0 and 24 years old and less than 5% were 65 years of age and above.

Figure 13: Age Structure of the Population by Ethnicity, Waitemata DHB, 2006



When broken down by TLA, Figure 14 shows that Waitakere City had the youngest population with close to 38% of people under the age of 25. Rodney District, on the other hand, had the highest percentage of older people (65+) among the TLAs in the WDHB region.

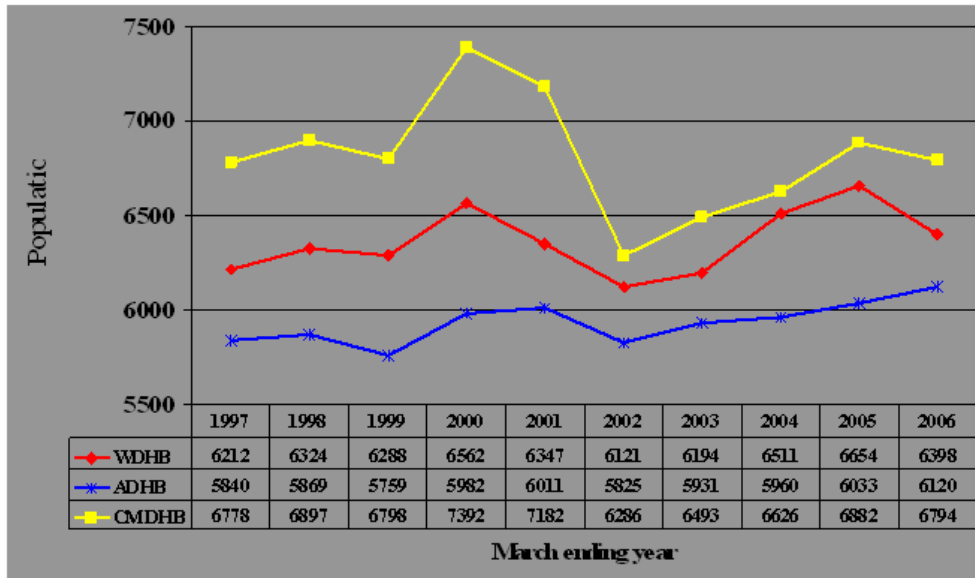
Figure 14: Age Structure of the Population by TLA, Waitemata DHB, 2006



1.12 Live Births

There were on average about 6,350 babies born annually in Waitemata DHB between 1997 and 2006. The number of births increased substantially in the year 2000, dropped back to a point below previous levels in the year 2002 and then increased again up until 2005.

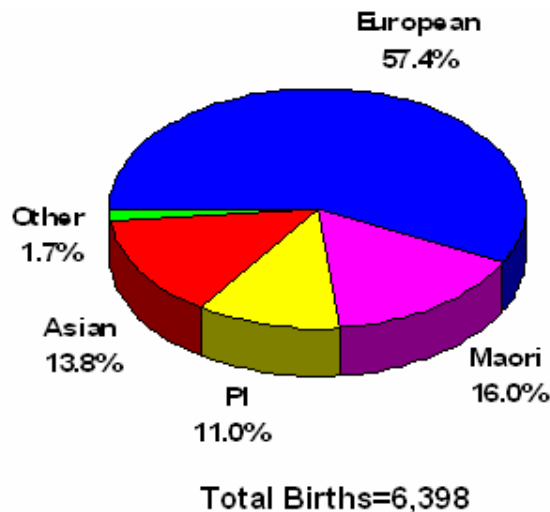
Figure 15: Number of Live Births in Auckland Region, 1997 – 2006



1.13 Live Births by Ethnicity

There were 6,398 babies born in Waitemata DHB between April 2005 and March 2006. Figure 16 below shows the number of live births by ethnicity. 57% of babies born were European. 16% were Maori babies, 11% were Pacific, 13.8% Asian and the remaining 1.7% were of other ethnic groups.

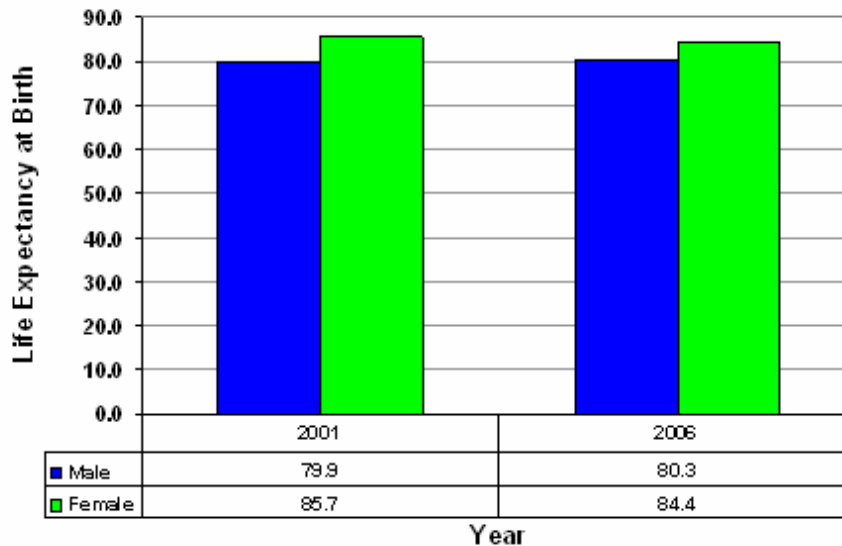
Figure 16: Number of Live Births by Ethnicity, Waitemata DHB, April 05-March 06



1.14 Life Expectancy at Birth

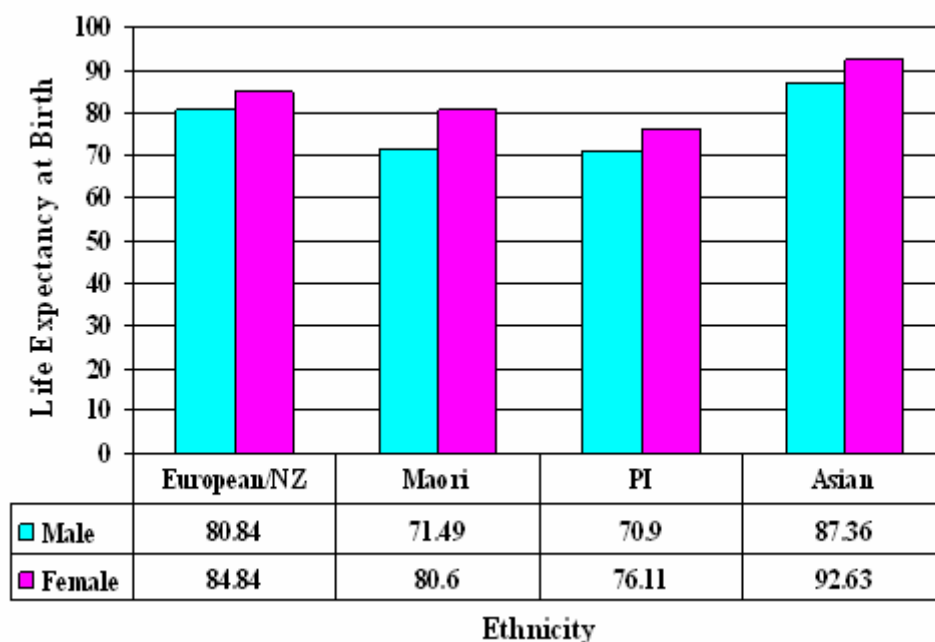
Life expectancy at birth is defined as the number of years a newborn would be expected to live based on today's pattern of death rates. Usually females are expected to live longer than males. Figure 17 shows that life expectancy for males has improved in 2006 compared with 2001 while life expectancy for females has decreased in WDHB.

Figure 17: Life Expectancy at Birth, Waitemata DHB, 2001 and 2006



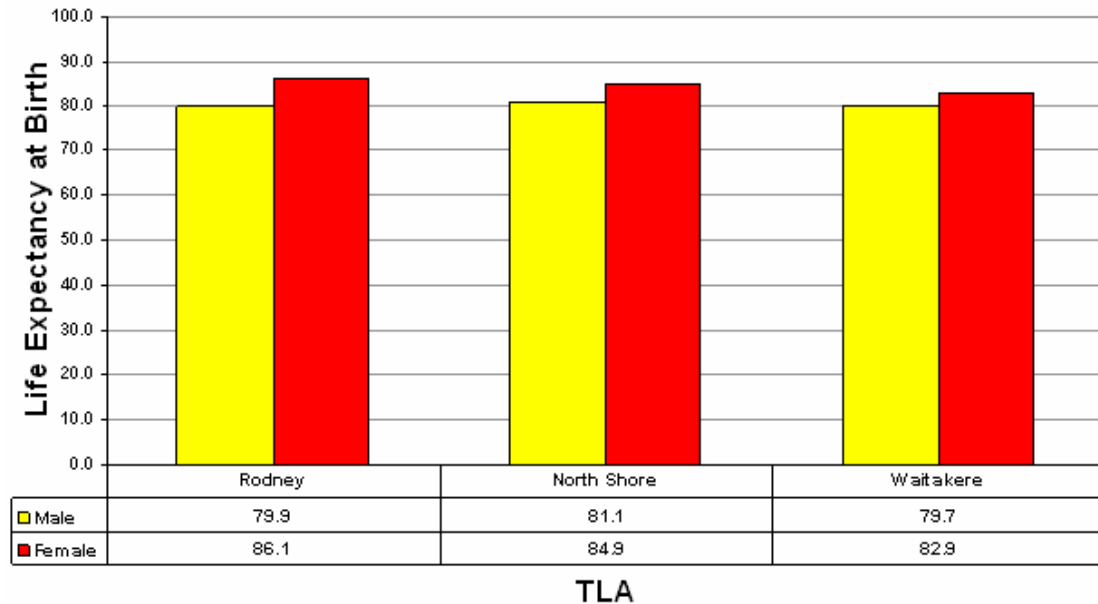
When broken down by ethnicity, Pacific people, both males and females, had the lowest life expectancies in the WDHB region. It is important to note here that life expectancies for Asians were high. This is because they are recent immigrants and came into New Zealand under certain criteria; having good health was one of the requirements.

Figure 18: Life Expectancy at Birth by Ethnicity, Waitemata DHB, 2006



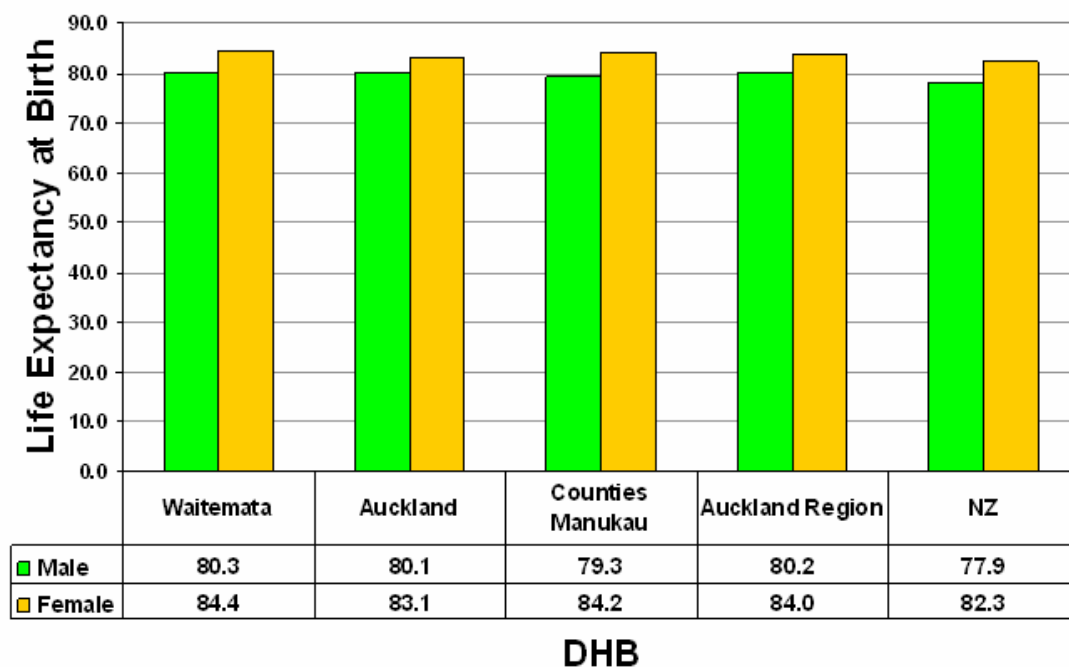
When broken down by TLA, males in North Shore City and females in Rodney District had the highest life expectancies in the WDHB region.

Figure 19: Life Expectancy at Birth by TLA, Waitemata DHB, 2006



When compared with the other DHBs in the Auckland region, WDHB had the highest life expectancy at birth for both males and females.

Figure 20: Life Expectancy at Birth by DHB Auckland region, 2006



2.0 Population Change for Waitemata DHB between 2001 and 2006

2.1 Population Change

There were 51,858 more people living in Waitemata DHB in 2006 than in 2001. The growth rate of 12.1% from 2001 was the second fastest in the country.

Table 9: Population Change by DHB between 2001 and 2006

DHB	Population 2001	Population 2006	Change from 2001	% Change from 2001
Waitemata	429,753	481,611	51,858	12.1%
Canterbury	427,095	466,404	39,309	9.2%
Counties Manukau	375,540	433,083	57,543	15.3%
Auckland	368,028	404,619	36,591	9.9%
Waikato	317,763	339,192	21,429	6.7%
Capital and Coast	245,952	266,658	20,706	8.4%
Bay of Plenty	178,179	194,934	16,755	9.4%
Otago	170,931	179,397	8,466	5.0%
Midcentral	154,974	158,841	3,867	2.5%
Hawke's Bay	143,547	148,248	4,701	3.3%
Northland	140,136	148,440	8,304	5.9%
Hutt	131,859	136,104	4,245	3.2%
Nelson Marlborough	122,490	130,062	7,572	6.2%
Southland	103,173	106,824	3,651	3.5%
Taranaki	103,032	104,274	1,242	1.2%
Lakes	95,988	98,319	2,331	2.4%
Whanganui	63,600	62,208	-1,392	-2.2%
South Canterbury	52,776	53,880	1,104	2.1%
Tairāwhiti	43,980	44,463	483	1.1%
Wairarapa	38,205	38,613	408	1.1%
West Coast	30,306	31,326	1,020	3.4%
New Zealand	3,737,307	4,027,500	290,193	7.8%

2.2 Population Change by Age Group

Table 10 shows the number and percent growth by age group in WDHB. WDHB experienced faster growth for all age groups than the comparative national growth.

Table 10: Population Change by Age Group between 2001 and 2006

Population Growth	2001	2006	Number Change WDHB	%Change WDHB	%Change NZ
0-14	97,233	104,553	7,320	7.5%	2.3%
15-24	57,273	67,707	10,434	18.2%	13.1%
25-44	133,452	143,112	9,660	7.2%	2.3%
45-64	95,439	113,295	17,856	18.7%	16.3%
65-74	25,458	28,542	3,084	12.1%	7.8%
75+	20,892	24,402	3,510	16.8%	12.7%
Total	429,747	481,611	51,864	12.1%	7.8%

Tables 11-13 show the number and percent growth by age group for the three TLAs in the WDHB region. Rodney was the fastest growing TLA in the region. Both Rodney and Waitakere had much faster growth in the elderly population than the North Shore.

Table 11: Population Change by Age Group between 2001 and 2006, Rodney

Population Growth	2001	2006	Number Change Rodney	%Change Rodney	%Change WDHB
0-14	17,301	19,623	2,322	13.4%	7.5%
15-24	7,602	9,486	1,884	24.8%	18.2%
25-44	21,387	23,538	2,151	10.1%	7.2%
45-64	18,534	23,562	5,028	27.1%	18.7%
65-74	6,417	7,281	864	13.5%	12.1%
75+	4,914	6,069	1,155	23.5%	16.8%
Total	76,155	89,559	13,404	17.6%	12.1%

Table 12: Population Change by Age Group between 2001 and 2006, Waitakere

Population Growth	2001	2006	Number Change Waitakere	%Change Waitakere	%Change WDHB
0-14	41,742	44,160	2,418	5.8%	7.5%
15-24	23,412	26,574	3,162	13.5%	18.2%
25-44	55,080	58,224	3,144	5.7%	7.2%
45-64	33,693	40,137	6,444	19.1%	18.7%
65-74	8,718	9,789	1,071	12.3%	12.1%
75+	6,120	7,563	1,443	23.6%	16.8%
Total	168,765	186,447	17,682	10.5%	12.1%

Table 13: Population Change by Age Group between 2001 and 2006, NorthShore

Population Growth	2001	2006	Number Change North Shore	%Change North Shore	%Change WDHB
0-14	38,190	40,767	2,577	6.7%	7.5%
15-24	26,259	31,650	5,391	20.5%	18.2%
25-44	56,985	61,347	4,362	7.7%	7.2%
45-64	43,212	49,593	6,381	14.8%	18.7%
65-74	10,323	11,475	1,152	11.2%	12.1%
75+	9,858	10,776	918	9.3%	16.8%
Total	184,827	205,608	20,781	11.2%	12.1%

2.3 Population Change Among Older People

There was a 14.2% increase in the number of older people (aged 65+) in Waitemata DHB from 2001 to 2006. Table 14 shows that the fastest growth was among those over the age of 85.

**Table 14: Population Change among Older Population
between 2001 and 2006**

Population Growth	2001	2006	Number Change WDHB	%Change WDHB	%Change NZ
65-74	25,458	28,542	3,084	12.1%	7.8%
75-84	16,146	18,423	2,277	14.1%	11.5%
85+	4,746	5,979	1,233	26.0%	16.5%
Total 65+	46,350	52,944	6,594	14.2%	10.0%

2.4 Population Change Among Children

There was an 7.5% increase in the number of children (aged 0-14) in Waitemata DHB from 2001 to 2006. Table 15 shows that the growth of this age group in Waitemata DHB was much higher than the nationwide growth.

**Table 15: Population Change among Children
between 2001 and 2006**

Population Growth	2001	2006	Number Change WDHB	%Change WDHB	%Change NZ
0-4	31,176	32,898	1,722	5.5%	1.6%
5-9	32,856	34,812	1,956	6.0%	0.1%
10-14	33,201	36,843	3,642	11.0%	5.2%
Total <15	97,233	104,553	7,320	7.5%	2.3%

2.5 Population Change by Ethnicity

Population growth among Maori, Pacific people, and Asians was higher in Waitemata DHB than the national average between 2001 and 2006. The largest change of any ethnic group both in Waitemata DHB and the country was seen in the growth of the Asian population between 2001 and 2006.

**Table 16: Population Change by Ethnicity
between 2001 and 2006**

Population Growth	2001	2006	Number Change WDHB	%Change WDHB	%Change NZ
Maori	39,684	42,882	3,198	8.1%	7.4%
Pacific	30,420	35,199	4,779	15.7%	14.7%
Asian	41,850	68,151	26,301	62.8%	48.9%

Note that for the purpose of comparison, the total responses were used instead of the prioritised definition.

3.0 Socio-Economic Status of People in Waitemata DHB, 2006

Unemployment

In comparison with the nation-wide figure, a slightly lower percentage of people older than 15 years of age in Waitemata DHB were unemployed. The unemployment rate in Waitemata DHB was 3.1%. Maori had the highest proportion of unemployed in comparison with other ethnic groups. This proportion however was still lower than the proportion of Maori unemployed nation-wide; 6.5% compared with 7.6%.



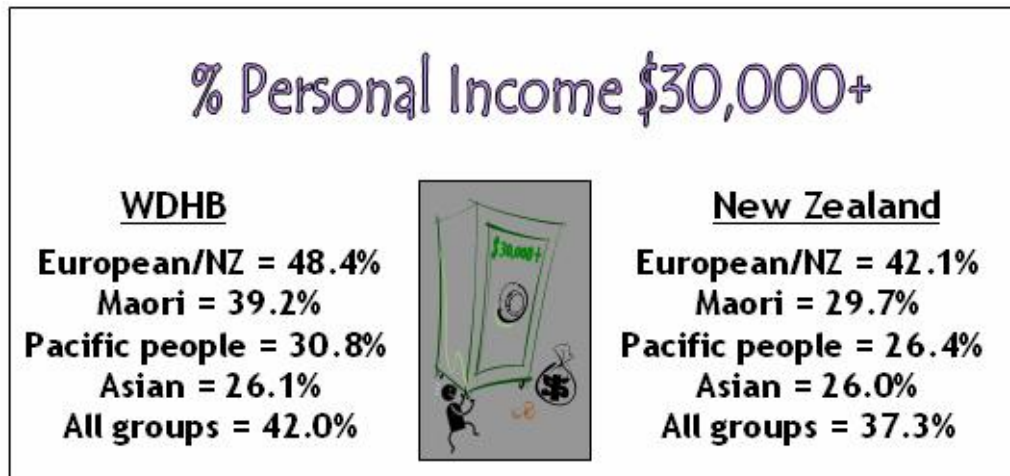
People Receiving Income Support

About 18% of people aged 15 years and over in Waitemata DHB received income support. Pacific people had the highest percentage (27.3%) followed by Maori (26.8%). The percentage of people on income support in Waitemata DHB was lower than the national figures for all ethnic groups.



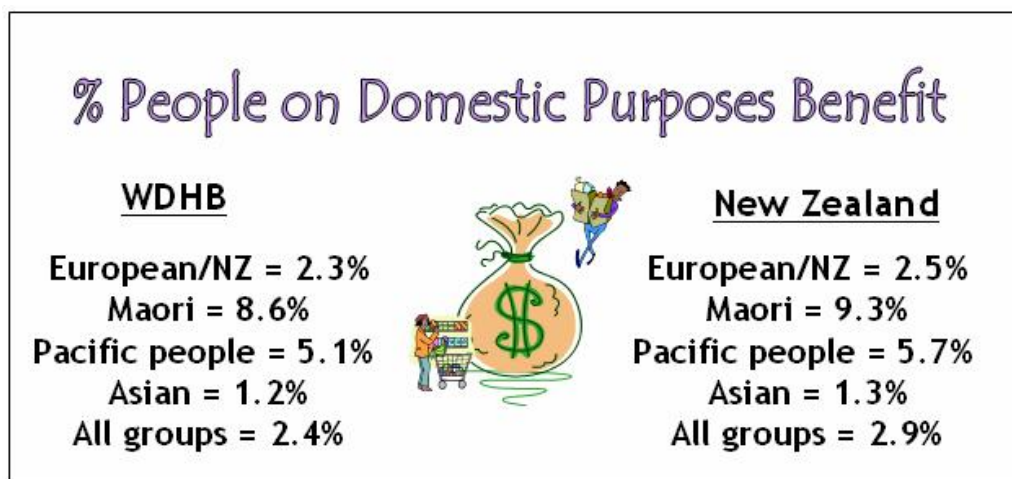
Personal Income of \$30,000 or More

42% of people aged 15 years and over who lived in Waitemata DHB had a personal income of \$30,000 or more per annum. Maori had the second highest proportion and Asian had the lowest proportion of individuals with a personal income of \$30,000 or more. The percentages in Waitemata DHB were higher than the comparative nation-wide figures for all ethnic groups.



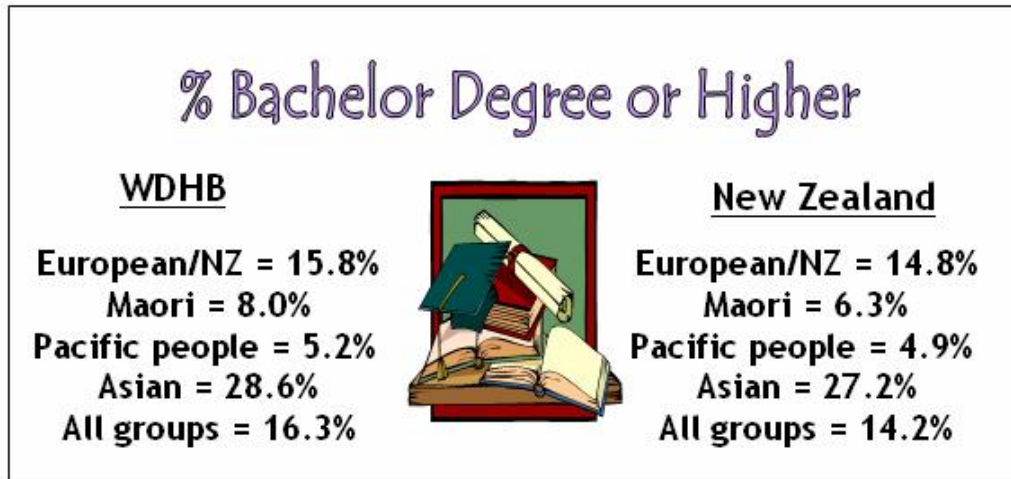
People Receiving Domestic Purposes Benefit

2.4% of all people aged 15 years and over in Waitemata DHB received the Domestic Purposes Benefit compared with about 2.9% nation-wide. Maori had the highest percentage of people on this benefit followed by Pacific people. The percentages in Waitemata DHB were lower when compared with the nation-wide figures for all ethnic groups.



People with a Bachelors Degree or Higher

About 16.3% of all adults in Waitemata DHB had completed a bachelors or higher degree. The Asian ethnic group had the highest proportion of people who had completed a bachelors or higher degree. The percentages in Waitemata DHB were higher than the nation-wide figures for all ethnic groups.



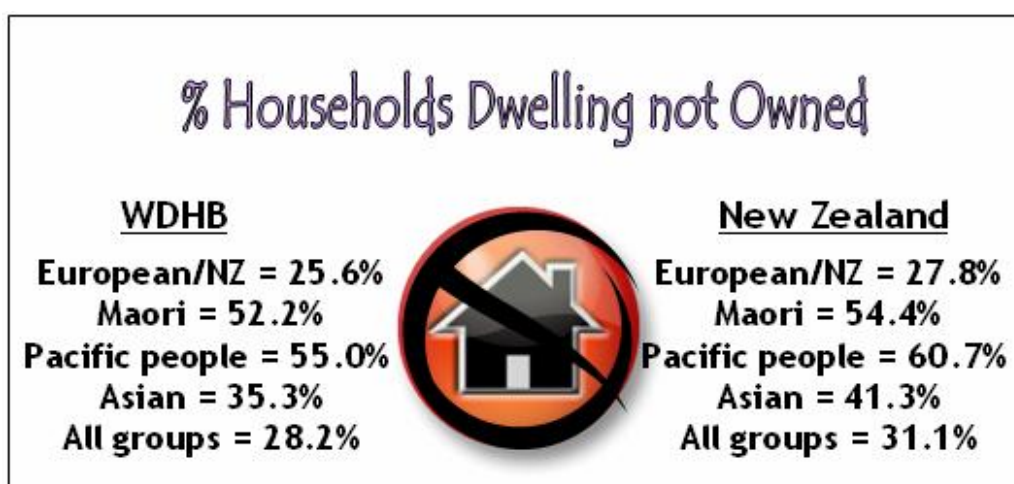
People with No Education

17.5% of the population aged 15 years and over in Waitemata DHB had no formal qualification. Maori had the highest percentage and Asian had the lowest. The percentages in Waitemata DHB were lower than the nation-wide figures for all ethnic groups.



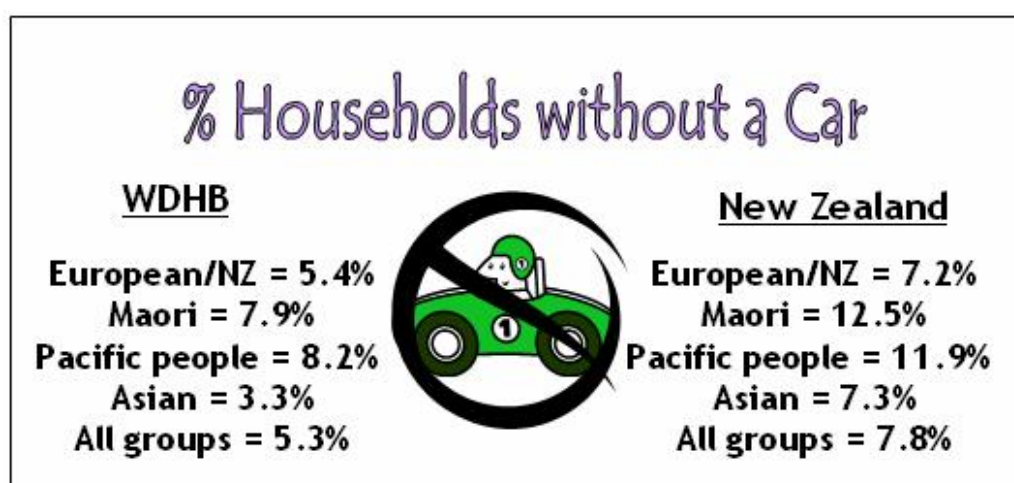
Nature of Occupancy

About 28% of all households in Waitemata DHB did not own or partially own their place of occupancy. The majority of this group rented, while a small proportion lived rent-free in a dwelling which they did not own. For all ethnic groups, the percentage of households living in dwellings which they did not own was lower than the comparable nation-wide figures. Maori and Pacific people had the highest percentage of households living in dwellings which they did not own.



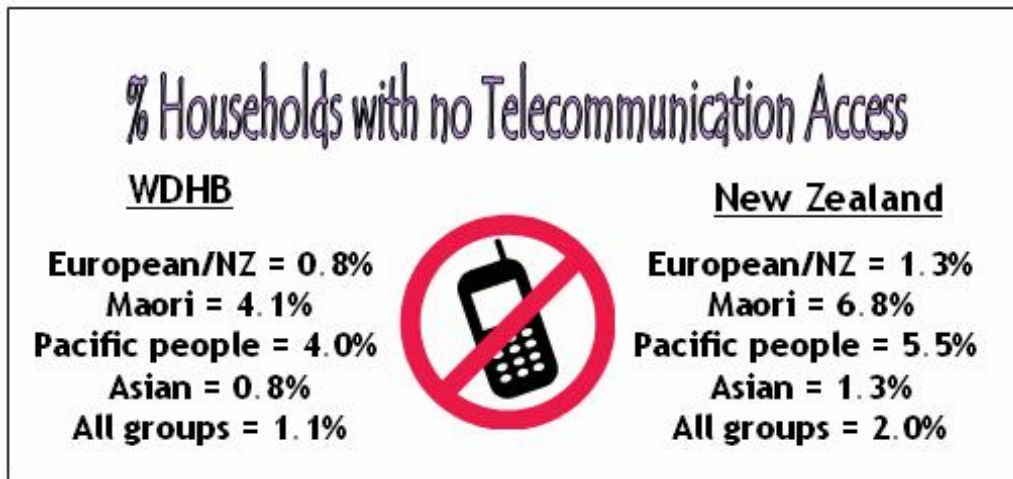
Households Without a Car

Lower percentages of households had no car available in Waitemata DHB than households nationwide. This applied for all ethnic groups. Pacific households had the highest percentage of households without a car (8.2%), followed by Maori households (7.9%).



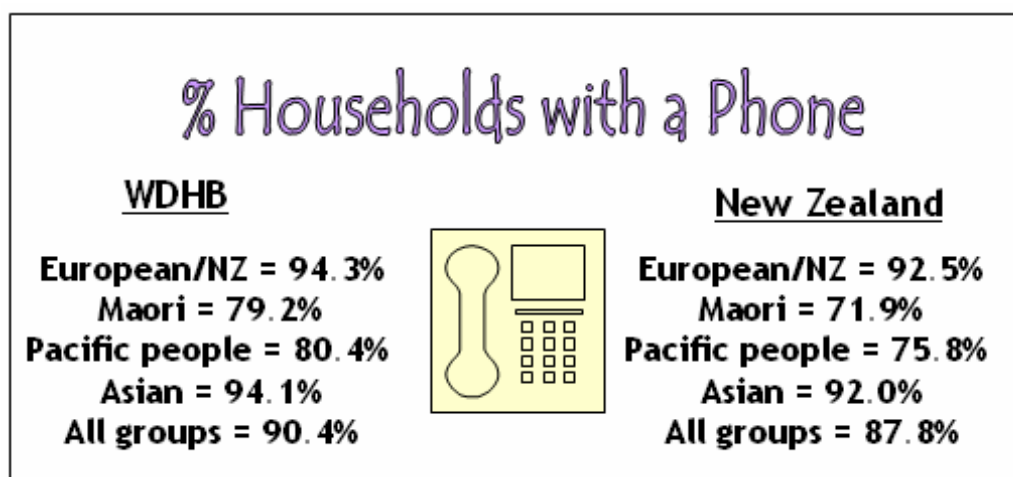
Households with No Access to Telecommunication Systems

Just over 1% of households in Waitemata DHB had no access to telecommunication systems; that is, no access to a telephone, a cellphone, a fax machine, or the internet. Maori and Pacific people had the highest proportion of households with no access to telecommunication systems. Compared with the national figures, all ethnic groups in Waitemata DHB had a smaller percentage of households with no telecommunication access.



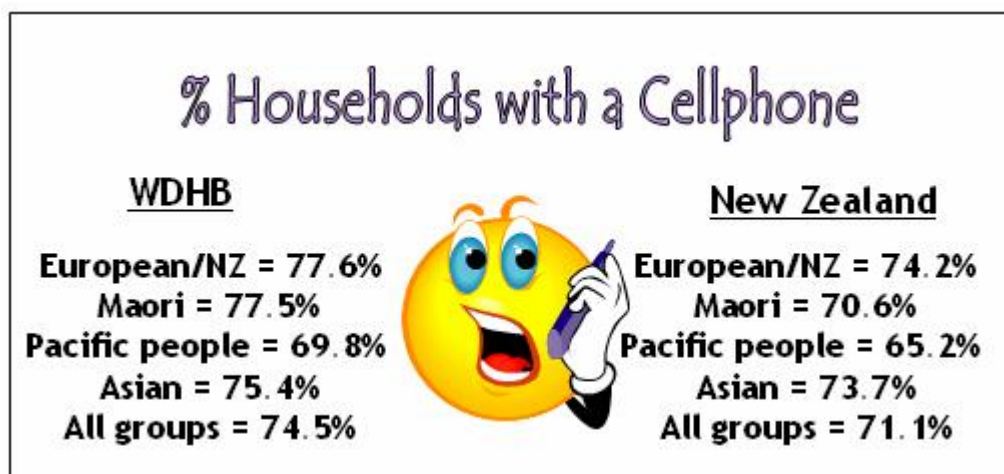
Households with Telephone Access

About 90% of households in Waitemata DHB had a telephone. Maori households had the lowest percentage of households with a phone (79.2%). European/NZ had the highest proportion of households with a telephone (94.3%).



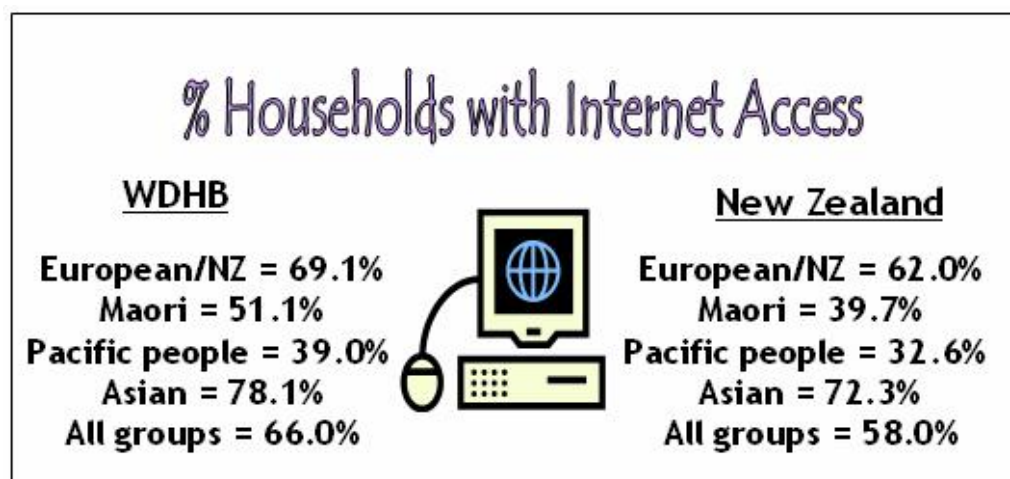
Households with Cellphone Access

About three quarters of all households in Waitemata DHB had access to a cellphone. This was slightly above the comparable national figure. The proportion of Waitemata DHB households with cellphone access was higher than the national figures for all ethnic groups.



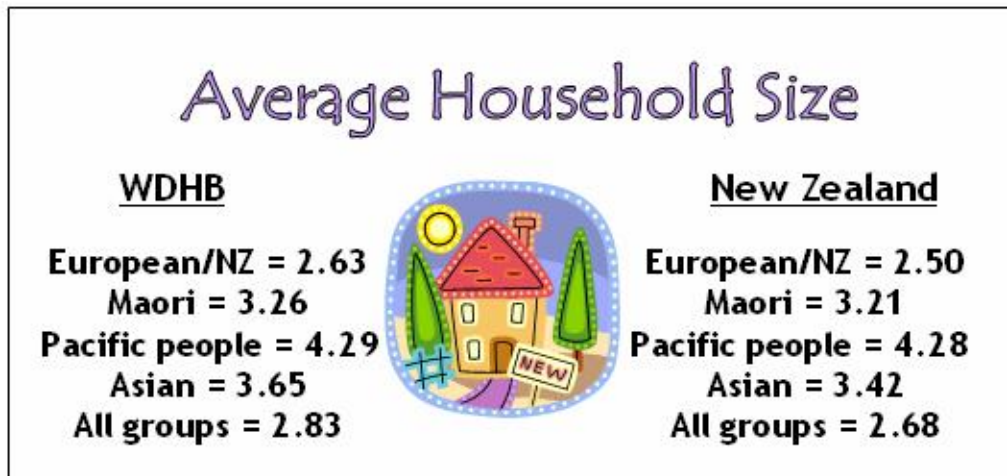
Households with Internet Access

About two thirds of all households in Waitemata DHB had access to the internet. This was above the comparable national figure of 58%. Pacific households had the lowest proportion of households with internet access (39.0%) and Asian households had the highest percentage of households with internet access (78.1%)



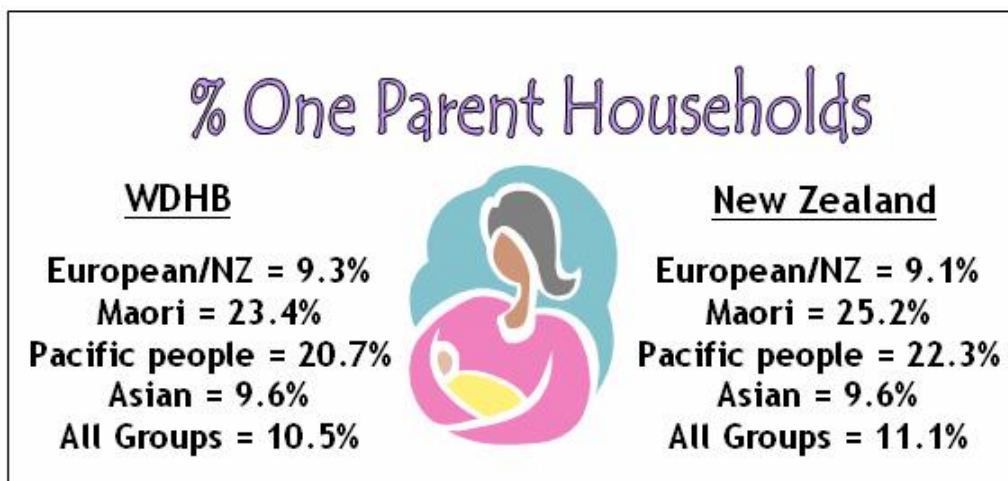
Household Size

The average number of people per household for Waitemata DHB was 2.83. When broken down by ethnic group Pacific people had the largest household size with an average of 4.29 people per household followed by Asian households with an average of 3.65. The average household size in Waitemata DHB was slightly higher than the national average.



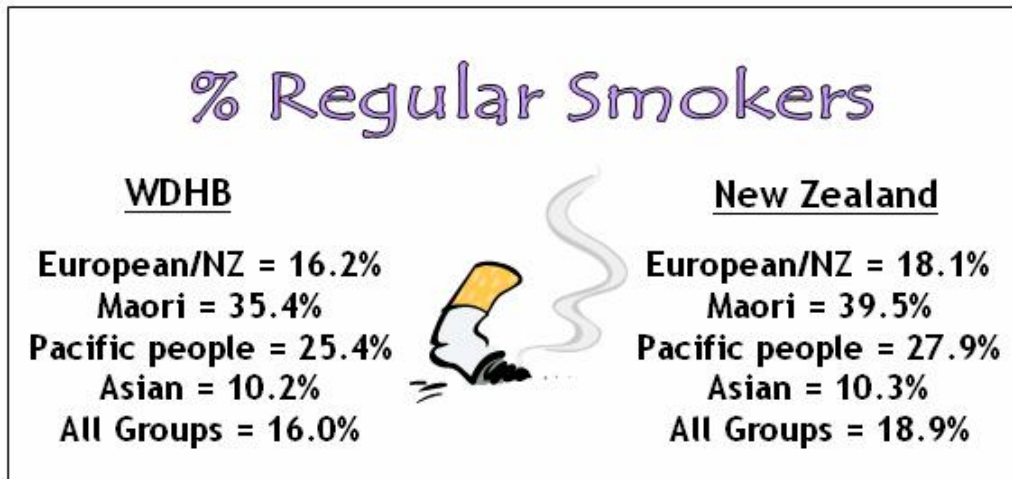
One Parent Families

About 10.5% of all family units in Waitemata DHB were homes with a single parent. Maori and Pacific people had the highest proportion of single parent homes but had a proportion slightly lower than the comparable national figures. Slightly more European/NZ homes in WDHB were single parent than the comparable national figure.



Smoking

Waitemata DHB had a smaller proportion of regular smokers in all ethnic groups when compared with the national figures. Maori had the highest while the Asian group had the smallest proportion of regular smokers in both Waitemata DHB and the country.



The figures related to the socio-economic status of people in Waitemata DHB by TLA (Rodney District, North Shore City, and Waitakere City) are available in Appendices D, E and F.

Appendix A: 2006 Census for New Zealand

2006 Census for New Zealand

Male	European	Maori	PI	Asian	New Zealander	Other	Total
0-1	12,834	7,056	2,607	2,364	2,274	1,629	28,764
1-4	51,318	26,757	10,284	8,649	8,814	5,796	111,618
5-9	68,760	34,038	12,882	11,730	12,171	6,951	146,532
10-14	77,361	34,215	12,780	13,587	11,997	7,176	157,116
15-19	78,414	28,929	11,505	15,624	9,840	8,124	152,436
20-24	65,001	20,259	8,685	22,143	9,597	9,399	135,084
25-29	57,897	17,526	7,905	14,937	10,671	8,280	117,216
30-34	69,996	18,006	8,001	11,766	14,865	8,253	130,887
35-39	79,854	17,751	8,091	11,937	16,938	8,430	143,001
40-44	86,712	17,316	7,290	13,404	18,138	8,040	150,900
45-49	85,773	14,937	5,835	11,160	18,240	7,107	143,052
50-54	77,289	11,565	4,794	8,277	16,590	5,796	124,311
55-59	76,059	8,853	3,618	5,805	15,783	5,106	115,224
60-64	60,756	6,081	2,622	3,789	11,367	3,723	88,338
65-69	50,874	4,833	1,974	3,309	8,196	2,928	72,114
70-74	41,976	3,036	1,143	2,229	5,238	2,256	55,878
75-79	37,857	1,611	708	1,137	3,159	1,884	46,356
80-84	24,822	687	318	528	1,512	1,257	29,124
85+	15,441	279	138	273	732	807	17,670
Total	1,118,994	273,735	111,180	162,648	196,122	102,942	1,965,621

Female	European	Maori	PI	Asian	New Zealander	Other	Total
0-1	12,522	6,870	2,508	2,223	2,088	1,653	27,864
1-4	49,512	25,269	9,756	8,037	8,574	5,682	106,830
5-9	65,367	32,361	12,474	11,208	11,409	7,137	139,956
10-14	73,785	32,226	12,216	12,681	10,857	7,131	148,896
15-19	77,004	29,379	11,316	15,030	7,566	7,467	147,762
20-24	65,712	22,368	9,201	22,389	7,782	8,439	135,891
25-29	62,478	20,490	8,817	16,341	9,366	7,734	125,226
30-34	79,761	21,339	8,649	15,246	13,026	7,656	145,677
35-39	89,706	20,751	8,925	16,443	15,069	7,659	158,553
40-44	94,341	19,863	7,860	16,737	16,587	7,407	162,795
45-49	90,639	16,899	6,174	13,269	16,521	6,867	150,369
50-54	80,523	12,561	4,854	9,399	15,387	5,697	128,421
55-59	78,657	9,741	3,795	6,420	14,754	4,980	118,347
60-64	63,234	6,711	2,841	4,398	10,422	3,675	91,281
65-69	54,780	5,301	2,256	3,552	7,458	3,087	76,434
70-74	46,731	3,468	1,524	2,298	4,665	2,370	61,056
75-79	45,069	2,187	981	1,266	3,213	2,142	54,858
80-84	36,963	1,071	555	720	2,142	1,662	43,113
85+	34,287	603	330	489	1,860	1,431	39,000
Total	1,201,071	289,458	115,032	178,146	178,746	99,876	2,062,329

2006 Census for New Zealand

Total	European	Maori	PI	Asian	New Zealander	Other	Total
0-1	25,356	13,917	5,127	4,584	4,362	3,285	56,631
1-4	100,833	52,020	20,034	16,689	17,391	11,481	218,448
5-9	134,133	66,399	25,350	22,938	23,580	14,088	286,488
10-14	151,143	66,441	24,993	26,268	22,854	14,310	306,009
15-19	155,415	58,311	22,803	30,657	17,406	15,606	300,198
20-24	130,716	42,636	17,883	44,529	17,379	17,835	270,978
25-29	120,369	38,010	16,716	31,266	20,037	16,041	242,439
30-34	149,757	39,351	16,653	27,018	27,891	15,891	276,561
35-39	169,560	38,511	17,028	28,380	32,007	16,068	301,554
40-44	181,053	37,179	15,150	30,147	34,722	15,447	313,698
45-49	176,415	31,833	12,012	24,426	34,761	13,974	293,421
50-54	157,809	24,129	9,645	17,673	31,977	11,496	252,729
55-59	154,713	18,594	7,410	12,231	30,537	10,089	233,574
60-64	123,987	12,777	5,469	8,193	21,786	7,404	179,616
65-69	105,651	10,131	4,230	6,858	15,651	6,024	148,545
70-74	88,704	6,498	2,673	4,533	9,903	4,623	116,934
75-79	82,926	3,801	1,686	2,403	6,375	4,023	101,214
80-84	61,788	1,764	870	1,239	3,657	2,922	72,240
85+	49,731	882	468	762	2,592	2,232	56,667
Total	2,320,059	563,184	226,200	340,794	374,868	202,839	4,027,944

Note: these numbers were based on the number of census usually resident population count.

The **census usually resident population count** includes all residents of a given area counted by the five-yearly Census of Population and Dwellings, irrespective of where in New Zealand those residents were counted. The census usually resident population count does not include adjustments for net census undercount or New Zealand residents temporarily overseas. Overseas visitors in New Zealand on census night are excluded.

Appendix B: Population by DHB, 1996-2006

DHB	1996	Proportion to NZ	2001	Proportion to NZ	2006	Proportion to NZ
Waitemata	394,209	10.9%	429,753	11.5%	481,611	12.0%
Canterbury	411,846	11.4%	427,095	11.4%	466,404	11.6%
Counties Manukau	341,790	9.4%	375,540	10.0%	433,083	10.8%
Auckland	346,302	9.6%	368,028	9.8%	404,619	10.0%
Waikato	312,918	8.6%	317,763	8.5%	339,192	8.4%
Capital and Coast	235,395	6.5%	245,952	6.6%	266,658	6.6%
Bay of Plenty	163,146	4.5%	178,179	4.8%	194,934	4.8%
Otago	176,478	4.9%	170,931	4.6%	179,397	4.5%
Midcentral	157,944	4.4%	154,974	4.1%	158,841	3.9%
Hawke's Bay	143,421	4.0%	143,547	3.8%	148,248	3.7%
Northland	137,064	3.8%	140,136	3.7%	148,440	3.7%
Hutt	132,591	3.7%	131,859	3.5%	136,104	3.4%
Nelson Marlborough	116,646	3.2%	122,490	3.3%	130,062	3.2%
Southland	107,589	3.0%	103,173	2.8%	106,824	2.7%
Taranaki	106,815	3.0%	103,032	2.8%	104,274	2.6%
Lakes	95,196	2.6%	95,988	2.6%	98,319	2.4%
Whanganui	67,851	1.9%	63,600	1.7%	62,208	1.5%
South Canterbury	54,324	1.5%	52,776	1.4%	53,880	1.3%
Tairāwhiti	45,789	1.3%	43,980	1.2%	44,463	1.1%
Wairarapa	38,505	1.1%	38,205	1.0%	38,613	1.0%
West Coast	32,529	0.9%	30,306	0.8%	31,326	0.8%
New Zealand	3,618,348	100.0%	3,737,307	100.0%	4,027,500	100.0%

Appendix C: 2006 Census for Waitemata DHB

2006 Census for Waitemata DHB

Male	European	Maori	PI	Asian	New Zealander	Other	Total
0-1	1,629	534	351	468	288	222	3,492
1-4	6,393	2,100	1,434	1,707	1,035	765	13,434
5-9	8,658	2,562	1,770	2,400	1,335	990	17,715
10-14	9,531	2,547	1,677	2,856	1,278	1,008	18,897
15-19	9,441	2,295	1,494	3,114	1,008	1,056	18,408
20-24	7,446	1,551	1,146	3,870	996	1,002	16,011
25-29	6,492	1,431	1,068	2,637	1,119	1,008	13,755
30-34	8,541	1,521	1,080	2,259	1,647	1,143	16,191
35-39	10,434	1,533	1,143	2,457	1,893	1,260	18,720
40-44	11,166	1,332	1,002	2,769	1,893	1,179	19,341
45-49	10,416	1,116	762	2,298	1,845	930	17,367
50-54	8,973	786	618	1,644	1,620	756	14,397
55-59	8,808	573	474	1,167	1,626	630	13,278
60-64	6,996	381	300	687	1,134	435	9,933
65-69	5,625	234	210	603	771	309	7,752
70-74	4,482	132	135	405	489	270	5,913
75-79	3,966	90	75	189	306	222	4,848
80-84	2,646	51	36	90	147	147	3,117
85+	1,614	21	15	51	63	120	1,884
Total	133,257	20,790	14,790	31,671	20,493	13,452	234,453

Female	European	Maori	PI	Asian	New Zealander	Other	Total
0-1	1,491	540	336	456	225	234	3,282
1-4	6,093	1,932	1,341	1,581	981	759	12,687
5-9	8,283	2,496	1,662	2,364	1,263	1,029	17,097
10-14	9,051	2,424	1,623	2,652	1,152	1,047	17,949
15-19	9,210	2,259	1,506	2,850	819	1,038	17,682
20-24	7,338	1,704	1,170	3,561	822	1,014	15,609
25-29	7,029	1,626	1,203	2,916	966	1,011	14,751
30-34	9,885	1,722	1,197	2,967	1,443	1,062	18,276
35-39	11,802	1,614	1,236	3,483	1,635	1,212	20,982
40-44	12,123	1,485	1,131	3,537	1,683	1,143	21,102
45-49	11,049	1,305	879	2,871	1,650	939	18,693
50-54	9,537	870	693	1,884	1,455	717	15,156
55-59	9,330	681	534	1,200	1,449	639	13,833
60-64	7,590	420	372	819	1,014	423	10,638
65-69	6,108	324	303	657	678	393	8,463
70-74	4,998	180	201	387	399	252	6,417
75-79	4,827	120	135	237	297	255	5,871
80-84	3,996	51	51	117	198	177	4,590
85+	3,663	36	42	63	144	147	4,095
Total	143,403	21,789	15,615	34,602	18,273	13,491	247,173

2006 Census for Waitemata DHB

Total	European	Maori	PI	Asian	New Zealander	Other	Total
0-1	3,120	1,080	687	921	510	456	6,774
1-4	12,480	4,029	2,775	3,288	2,019	1,533	26,124
5-9	16,938	5,052	3,435	4,758	2,598	2,031	34,812
10-14	18,582	4,977	3,291	5,511	2,427	2,055	36,843
15-19	18,648	4,560	3,000	5,961	1,824	2,097	36,090
20-24	14,781	3,270	2,310	7,434	1,815	2,007	31,617
25-29	13,521	3,063	2,268	5,553	2,085	2,019	28,509
30-34	18,429	3,246	2,271	5,229	3,093	2,196	34,464
35-39	22,236	3,141	2,379	5,937	3,528	2,478	39,699
40-44	23,286	2,817	2,133	6,306	3,576	2,322	40,440
45-49	21,471	2,418	1,638	5,163	3,495	1,875	36,060
50-54	18,510	1,653	1,317	3,525	3,075	1,473	29,553
55-59	18,135	1,251	1,008	2,370	3,078	1,269	27,111
60-64	14,583	801	672	1,503	2,145	867	20,571
65-69	11,733	552	510	1,263	1,449	705	16,212
70-74	9,477	318	333	792	885	525	12,330
75-79	8,790	216	207	423	603	477	10,716
80-84	6,639	99	87	201	342	339	7,707
85+	5,277	60	57	117	204	264	5,979
Total	276,636	42,603	30,378	66,255	38,751	26,988	481,611

Appendix D: 2006 Census for Waitemata DHB by TLA

2006 Census for Rodney District

Male	European	Maori	PI	Asian	New Zealander	Other	Total
0-4	1,887	405	87	75	297	120	2,871
5-9	2,271	486	69	99	369	135	3,429
10-14	2,457	498	72	138	345	144	3,654
15-19	2,055	414	69	132	249	108	3,027
20-24	1,254	204	39	87	168	84	1,836
25-29	1,047	201	51	63	192	108	1,662
30-34	1,602	258	57	54	303	138	2,412
35-39	2,298	267	54	81	441	210	3,351
40-44	2,610	273	63	102	489	183	3,720
45-49	2,496	228	36	84	435	150	3,429
50-54	2,115	153	21	63	408	159	2,919
55-59	2,109	135	18	48	420	132	2,862
60-64	1,845	78	12	33	312	105	2,385
65-69	1,632	51	9	21	285	57	2,055
70-74	1,326	24	6	15	165	45	1,581
75-79	1,149	15	3	6	108	33	1,314
80-84	765	15	3	3	48	30	864
85+	441	3	0	0	21	15	480
Total	31,359	3,708	669	1,104	5,055	1,956	43,851

Female	European	Maori	PI	Asian	New Zealander	Other	Total
0-4	1,830	426	63	75	288	120	2,802
5-9	2,223	474	81	102	342	135	3,357
10-14	2,361	471	75	138	312	150	3,507
15-19	2,055	360	51	126	198	129	2,919
20-24	1,173	213	39	69	132	78	1,704
25-29	1,146	210	33	81	171	117	1,758
30-34	1,962	288	51	111	291	168	2,871
35-39	2,748	291	54	162	387	204	3,846
40-44	2,871	252	36	141	432	189	3,921
45-49	2,502	252	39	141	414	159	3,507
50-54	2,199	156	33	87	390	168	3,033
55-59	2,217	132	21	45	381	132	2,928
60-64	1,968	87	15	42	297	96	2,505
65-69	1,650	57	21	18	234	63	2,043
70-74	1,356	36	15	18	132	45	1,602
75-79	1,269	24	9	15	93	48	1,458
80-84	924	12	6	3	42	27	1,014
85+	864	9	6	0	33	27	939
Total	33,318	3,750	648	1,374	4,569	2,055	45,714

2006 Census for Rodney District

Total	European	Maori	PI	Asian	New Zealander	Other	Total
0-4	3,720	837	150	147	582	240	5,676
5-9	4,494	960	156	201	711	264	6,786
10-14	4,818	960	147	279	657	300	7,161
15-19	4,107	762	120	255	450	252	5,946
20-24	2,427	408	81	159	300	165	3,540
25-29	2,190	411	81	147	366	225	3,420
30-34	3,561	546	108	162	594	312	5,283
35-39	5,046	555	108	243	831	411	7,194
40-44	5,478	525	90	240	921	387	7,641
45-49	5,001	474	75	237	852	297	6,936
50-54	4,314	312	60	153	798	312	5,949
55-59	4,329	261	36	96	801	264	5,787
60-64	3,813	162	30	72	606	207	4,890
65-69	3,285	102	30	42	519	123	4,101
70-74	2,685	66	21	36	297	75	3,180
75-79	2,418	45	9	18	201	81	2,772
80-84	1,689	24	9	9	90	54	1,875
85+	1,305	12	6	3	51	45	1,422
Total	64,680	7,422	1,317	2,499	9,627	4,014	89,559

Elderly People

Population Growth	2001	2006	Number Change Rodney	%Change Rodney	%Change WDHB
65-74	6,417	7,281	864	13.5%	12.1%
75-84	3,927	4,647	720	18.3%	14.1%
85+	987	1,422	435	44.1%	26.0%
Total 65+	11,331	13,350	2,019	17.8%	14.2%

Children

Population Growth	2001	2006	Number Change Rodney	%Change Rodney	%Change WDHB
0-4	5,226	5,676	450	8.6%	5.5%
5-9	6,036	6,786	750	12.4%	6.0%
10-14	6,039	7,161	1,122	18.6%	11.0%
Total <15	17,301	19,623	2,322	13.4%	7.5%

2006 Census for North Shore City

Male	European	Maori	PI	Asian	New Zealander	Other	Total
0-4	3,534	750	330	1,029	552	282	6,477
5-9	3,738	696	333	1,194	513	321	6,795
10-14	4,215	708	297	1,620	555	321	7,716
15-19	4,437	693	273	1,902	468	402	8,175
20-24	3,891	570	222	2,469	510	408	8,070
25-29	3,231	492	216	1,539	525	360	6,363
30-34	3,966	462	192	1,137	732	363	6,852
35-39	4,629	480	249	1,242	774	441	7,815
40-44	4,881	414	207	1,476	792	393	8,163
45-49	4,584	309	123	1,302	804	348	7,470
50-54	4,125	231	108	900	741	267	6,372
55-59	3,954	174	75	651	765	195	5,814
60-64	3,069	129	45	363	555	147	4,308
65-69	2,310	78	36	306	309	87	3,126
70-74	1,764	36	24	225	207	72	2,328
75-79	1,554	33	9	102	126	66	1,890
80-84	1,131	15	3	42	72	45	1,308
85+	729	6	6	30	27	48	846
Total	59,742	6,276	2,748	17,529	9,027	4,566	99,888

Female	European	Maori	PI	Asian	New Zealander	Other	Total
0-4	3,324	672	324	999	489	279	6,087
5-9	3,549	642	291	1,248	507	324	6,561
10-14	3,981	609	267	1,437	498	339	7,131
15-19	4,404	666	273	1,728	351	372	7,794
20-24	3,768	570	237	2,235	402	402	7,614
25-29	3,384	531	195	1,599	426	327	6,462
30-34	4,488	489	204	1,515	633	336	7,665
35-39	5,178	474	234	1,848	696	426	8,856
40-44	5,409	399	198	2,067	708	384	9,165
45-49	5,154	357	159	1,614	702	297	8,283
50-54	4,398	240	126	1,035	648	240	6,687
55-59	4,236	207	93	663	678	189	6,066
60-64	3,408	126	66	396	432	159	4,587
65-69	2,559	90	57	372	282	132	3,492
70-74	1,995	51	30	201	159	96	2,532
75-79	2,109	33	21	126	132	90	2,511
80-84	1,881	18	15	57	105	60	2,136
85+	1,902	12	9	30	81	51	2,085
Total	65,127	6,186	2,799	19,170	7,929	4,503	105,714

2006 Census for North Shore City

Total	European	Maori	PI	Asian	New Zealander	Other	Total
0-4	6,861	1,410	654	2,028	1,041	570	12,564
5-9	7,290	1,335	618	2,445	1,026	642	13,356
10-14	8,193	1,317	564	3,048	1,053	672	14,847
15-19	8,838	1,362	546	3,624	819	777	15,966
20-24	7,659	1,152	462	4,698	912	801	15,684
25-29	6,618	1,026	414	3,141	951	675	12,825
30-34	8,454	948	399	2,646	1,365	705	14,517
35-39	9,810	951	480	3,090	1,473	870	16,674
40-44	10,293	810	408	3,543	1,497	780	17,331
45-49	9,738	663	285	2,913	1,503	654	15,756
50-54	8,523	465	240	1,938	1,386	507	13,059
55-59	8,190	381	165	1,314	1,443	387	11,880
60-64	6,474	249	114	762	984	315	8,898
65-69	4,869	162	93	675	591	225	6,615
70-74	3,762	78	57	426	369	168	4,860
75-79	3,663	63	33	228	258	156	4,401
80-84	3,009	27	15	102	177	114	3,444
85+	2,634	24	15	60	108	90	2,931
Total	124,878	12,423	5,562	36,681	16,956	9,108	205,608

Elderly People

Population Growth	2001	2006	Number Change North Shore	%Change North Shore	%Change WDHB
65-74	10,323	11,475	1,152	11.2%	12.1%
75-84	7,398	7,845	447	6.0%	14.1%
85+	2,460	2,931	471	19.1%	26.0%
Total 65+	20,181	22,251	2,070	10.3%	14.2%

Children

Population Growth	2001	2006	Number Change North Shore	%Change North Shore	%Change WDHB
0-4	11,820	12,564	744	6.3%	5.5%
5-9	12,732	13,356	624	4.9%	6.0%
10-14	13,638	14,847	1,209	8.9%	11.0%
Total <15	38,190	40,767	2,577	6.7%	7.5%

2006 Census for Waitakere City

Male	European	Maori	PI	Asian	New Zealander	Other	Total
0-4	2,598	1,467	1,383	1,068	477	588	7,581
5-9	2,649	1,380	1,365	1,098	447	555	7,494
10-14	2,859	1,341	1,308	1,098	375	546	7,527
15-19	2,949	1,179	1,137	1,083	291	567	7,206
20-24	2,301	786	882	1,308	318	510	6,105
25-29	2,211	738	807	1,035	402	537	5,730
30-34	2,979	801	828	1,074	612	633	6,927
35-39	3,507	771	843	1,137	675	618	7,551
40-44	3,672	651	744	1,188	615	585	7,455
45-49	3,342	579	597	909	606	432	6,465
50-54	2,730	399	486	681	468	339	5,103
55-59	2,751	246	384	468	441	315	4,605
60-64	2,082	168	249	288	270	180	3,237
65-69	1,686	108	165	282	177	153	2,571
70-74	1,389	72	102	171	117	153	2,004
75-79	1,266	45	57	84	69	123	1,644
80-84	750	18	27	39	27	87	948
85+	441	9	12	24	12	57	555
Total	42,162	10,758	11,376	13,035	6,399	6,978	90,708

Female	European	Maori	PI	Asian	New Zealander	Other	Total
0-4	2,424	1,386	1,284	963	426	594	7,077
5-9	2,508	1,368	1,287	1,017	411	585	7,176
10-14	2,709	1,344	1,284	1,068	342	561	7,308
15-19	2,754	1,236	1,194	1,002	267	519	6,972
20-24	2,400	921	885	1,263	285	537	6,291
25-29	2,496	888	966	1,233	366	582	6,531
30-34	3,435	948	942	1,353	516	546	7,740
35-39	3,873	849	939	1,470	552	594	8,277
40-44	3,846	819	897	1,332	546	573	8,013
45-49	3,396	708	681	1,104	531	483	6,903
50-54	2,937	477	528	759	423	315	5,439
55-59	2,877	348	426	492	396	300	4,839
60-64	2,220	210	288	378	285	168	3,549
65-69	1,896	180	228	267	162	195	2,928
70-74	1,641	99	150	162	108	126	2,286
75-79	1,443	57	105	99	72	126	1,902
80-84	1,194	21	39	54	51	81	1,440
85+	888	18	27	33	33	72	1,071
Total	44,937	11,877	12,150	14,049	5,772	6,957	95,742

2006 Census for Waitakere City

Total	European	Maori	PI	Asian	New Zealander	Other	Total
0-4	5,022	2,862	2,658	2,034	903	1,176	14,655
5-9	5,160	2,763	2,652	2,109	861	1,125	14,670
10-14	5,571	2,694	2,589	2,169	720	1,092	14,835
15-19	5,703	2,430	2,337	2,076	558	1,074	14,178
20-24	4,698	1,704	1,764	2,571	606	1,053	12,396
25-29	4,710	1,632	1,770	2,265	768	1,116	12,261
30-34	6,411	1,752	1,773	2,430	1,131	1,170	14,667
35-39	7,386	1,617	1,791	2,604	1,227	1,203	15,828
40-44	7,518	1,473	1,644	2,523	1,158	1,152	15,468
45-49	6,738	1,281	1,281	2,019	1,137	912	13,368
50-54	5,673	867	1,014	1,440	891	657	10,542
55-59	5,619	603	810	966	834	609	9,441
60-64	4,296	381	534	663	552	360	6,786
65-69	3,582	285	390	546	336	360	5,499
70-74	3,033	168	252	333	225	279	4,290
75-79	2,709	108	165	177	141	246	3,546
80-84	1,941	42	66	96	75	168	2,388
85+	1,332	27	42	54	45	129	1,629
Total	87,102	22,689	23,532	27,075	12,168	13,881	186,447

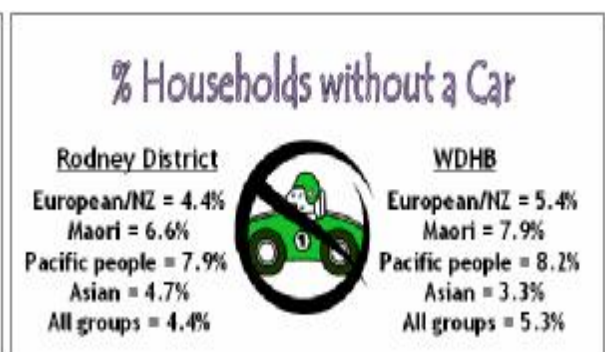
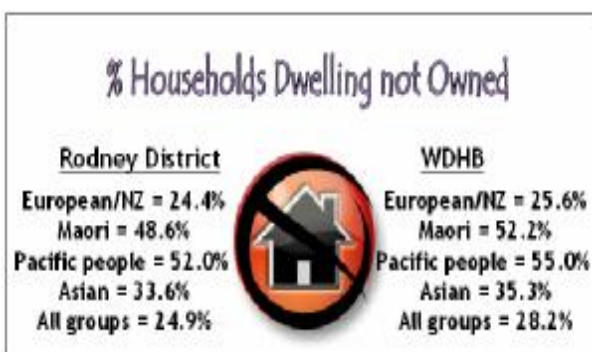
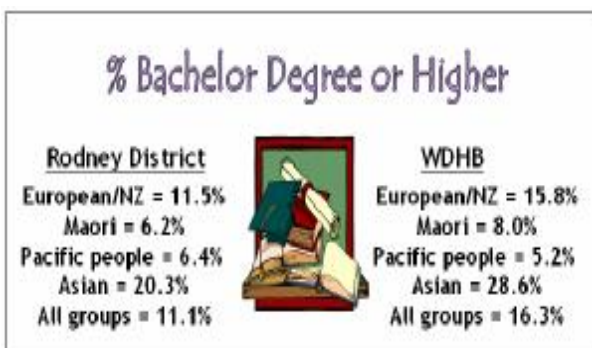
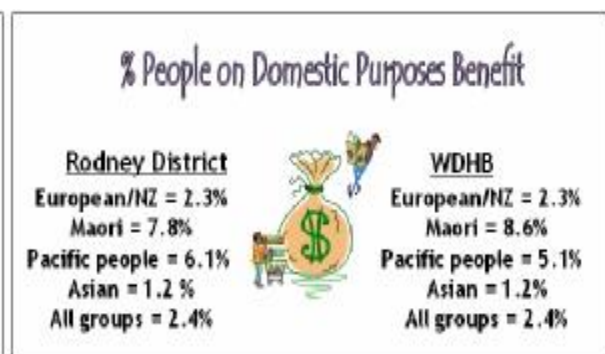
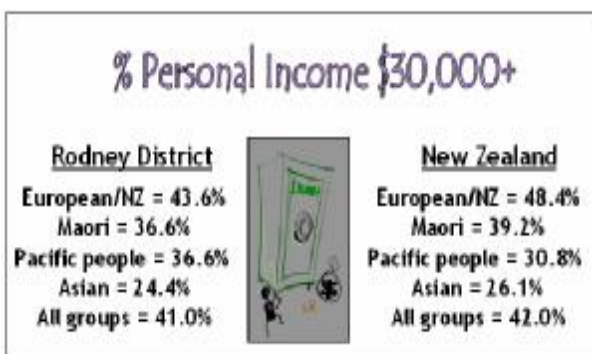
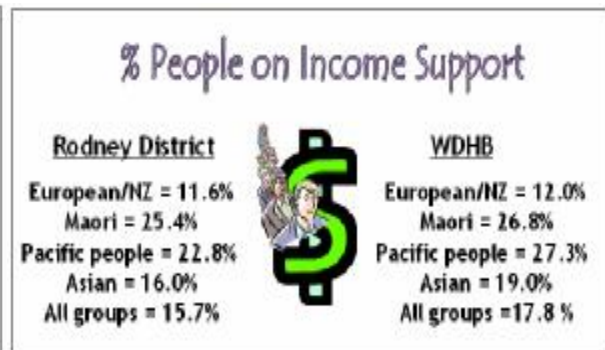
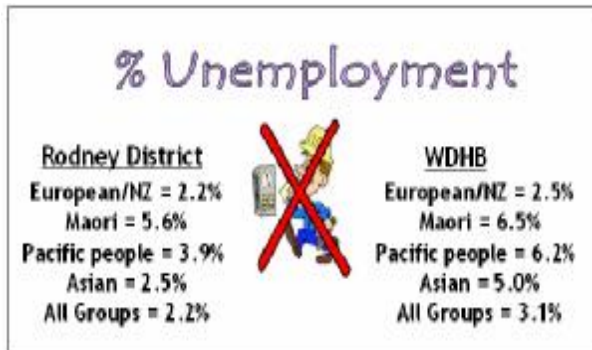
Elderly People

Population Growth	2001	2006	Number Change Waitakere	%Change Waitakere	%Change WDHB
65-74	8,718	9,789	1,071	12.3%	12.1%
75-84	4,821	5,934	1,113	23.1%	14.1%
85+	1,299	1,629	330	25.4%	26.0%
Total 65+	14,838	17,352	2,514	16.9%	14.2%

Children

Population Growth	2001	2006	Number Change Waitakere	%Change Waitakere	%Change WDHB
0-4	14,130	14,655	525	3.7%	5.5%
5-9	14,088	14,670	582	4.1%	6.0%
10-14	13,524	14,835	1,311	9.7%	11.0%
Total <15	41,742	44,160	2,418	5.8%	7.5%

Appendix E: Socio-Economic Status of People in Rodney District, 2006



% Households with no Telecommunication Access

Rodney District

European/NZ = 1.0%
 Maori = 4.8%
 Pacific people = 4.8%
 Asian = 1.4%
 All groups = 1.2%



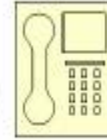
WDHB

European/NZ = 0.8%
 Maori = 4.1%
 Pacific people = 4.0%
 Asian = 0.8%
 All groups = 1.1%

% Households with a Phone

Rodney District

European/NZ = 92.2%
 Maori = 74.7%
 Pacific people = 74.2%
 Asian = 90.6%
 All groups = 88.9%



WDHB

European/NZ = 94.3%
 Maori = 79.2%
 Pacific people = 80.4%
 Asian = 94.1%
 All groups = 90.4%

% Households with a Cellphone

Rodney District

European/NZ = 77.5%
 Maori = 77.7%
 Pacific people = 75.8%
 Asian = 76.5%
 All groups = 75.2%



WDHB

European/NZ = 77.6%
 Maori = 77.5%
 Pacific people = 69.8%
 Asian = 75.4%
 All groups = 74.5%

% Households with Internet Access

Rodney District

European/NZ = 66.5%
 Maori = 48.5%
 Pacific people = 47.6%
 Asian = 72.8%
 All groups = 63.9%



WDHB

European/NZ = 69.1%
 Maori = 51.1%
 Pacific people = 39.0%
 Asian = 78.1%
 All groups = 66.0%

Average Household Size

Rodney District

European/NZ = 2.61
 Maori = 3.11
 Pacific people = 3.28
 Asian = 3.40
 All groups = 2.83



WDHB

European/NZ = 2.63
 Maori = 3.26
 Pacific people = 4.29
 Asian = 3.65
 All groups = 2.83

% One Parent Households

Rodney District

European/NZ = 7.5%
 Maori = 18.9%
 Pacific people = 17.2%
 Asian = 8.5%
 All Groups = 7.9%



WDHB

European/NZ = 9.3%
 Maori = 23.4%
 Pacific people = 20.7%
 Asian = 9.6%
 All Groups = 10.5%

% Regular Smokers

Rodney District

European/NZ = 15.7%
 Maori = 34.7%
 Pacific people = 25.1%
 Asian = 9.5%
 All Groups = 15.8%



WDHB

European/NZ = 16.2%
 Maori = 35.4%
 Pacific people = 25.3%
 Asian = 10.3%
 All Groups = 16.0%

Appendix F: Socio-Economic Status of People in North Shore City, 2006



% Households with no Telecommunication Access

North Shore City

European/NZ = 0.6%
 Maori = 2.3%
 Pacific people = 3.2%
 Asian = 0.7%
 All groups = 0.7%



WDHB

European/NZ = 0.8%
 Maori = 4.1%
 Pacific people = 4.0%
 Asian = 0.8%
 All groups = 1.1%

% Households with a Phone

North Shore City

European/NZ = 95.6%
 Maori = 84.8%
 Pacific people = 82.9%
 Asian = 94.6%
 All groups = 93.5%



WDHB

European/NZ = 94.3%
 Maori = 79.2%
 Pacific people = 80.4%
 Asian = 94.1%
 All groups = 90.4%

% Households with a Cellphone

North Shore City

European/NZ = 79.0%
 Maori = 80.2%
 Pacific people = 74.1%
 Asian = 75.7%
 All groups = 77.0%



WDHB

European/NZ = 77.6%
 Maori = 77.5%
 Pacific people = 69.8%
 Asian = 75.4%
 All groups = 74.5%

% Households with Internet Access

North Shore City

European/NZ = 73.3%
 Maori = 60.8%
 Pacific people = 45.8%
 Asian = 81.8%
 All groups = 72.4%



WDHB

European/NZ = 69.1%
 Maori = 51.1%
 Pacific people = 39.0%
 Asian = 78.1%
 All groups = 66.0%

Average Household Size

North Shore City

European/NZ = 2.62
 Maori = 3.10
 Pacific people = 3.88
 Asian = 3.65
 All groups = 2.80



WDHB

European/NZ = 2.63
 Maori = 3.26
 Pacific people = 4.29
 Asian = 3.65
 All groups = 2.83

% One Parent Households

North Shore City

European/NZ = 8.4%
 Maori = 19.9%
 Pacific people = 18.5%
 Asian = 10.0%
 All Groups = 9.2%



WDHB

European/NZ = 9.3%
 Maori = 23.4%
 Pacific people = 20.7%
 Asian = 9.6%
 All Groups = 10.5%

% Regular Smokers

North Shore City

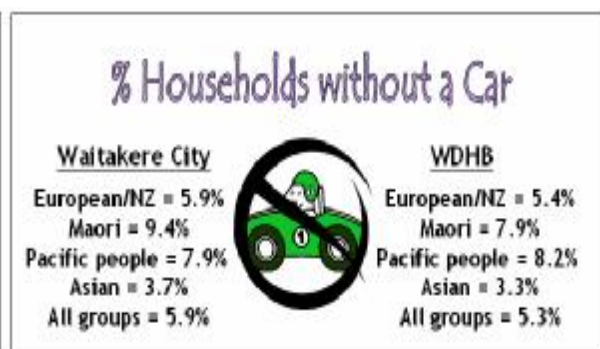
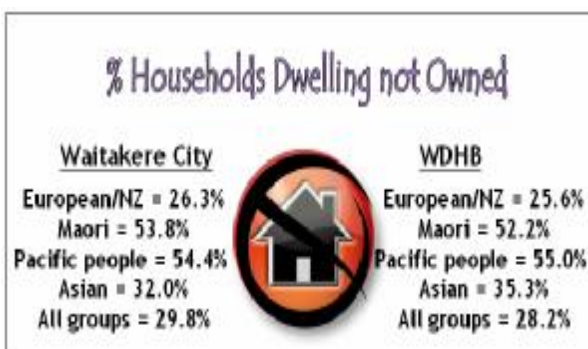
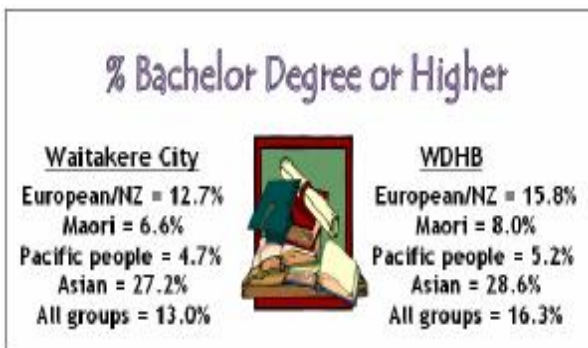
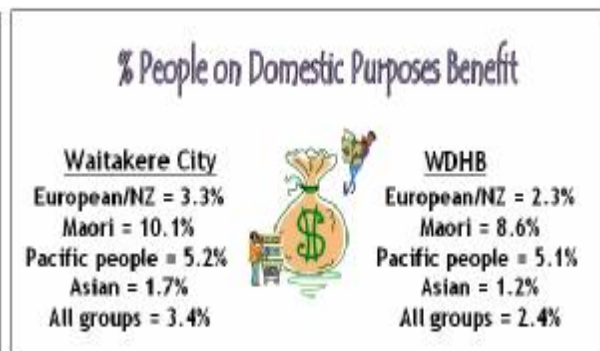
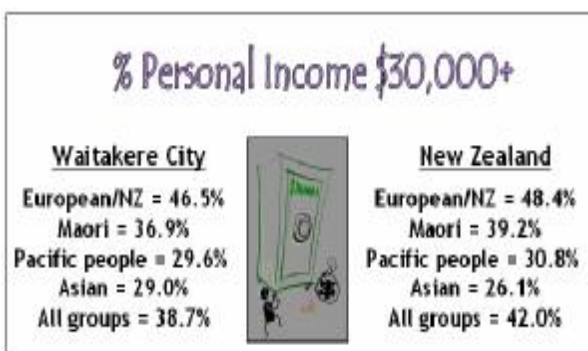
European/NZ = 13.7%
 Maori = 30.3%
 Pacific people = 25.2%
 Asian = 10.4%
 All Groups = 13.5%



WDHB

European/NZ = 16.2%
 Maori = 35.4%
 Pacific people = 25.3%
 Asian = 10.3%
 All Groups = 16.0%

Appendix G: Socio-Economic Status of People in Waitakere City, 2006



% Households with no Telecommunication Access

Waitakere City

European/NZ = 1.0%
 Maori = 4.8%
 Pacific people = 4.2%
 Asian = 0.9%
 All groups = 1.5%



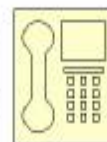
WDHB

European/NZ = 0.8%
 Maori = 4.1%
 Pacific people = 4.0%
 Asian = 0.8%
 All groups = 1.1%

% Households with a Phone

Waitakere City

European/NZ = 93.9%
 Maori = 77.7%
 Pacific people = 80.3%
 Asian = 93.9%
 All groups = 87.6%



WDHB

European/NZ = 94.3%
 Maori = 79.2%
 Pacific people = 80.4%
 Asian = 94.1%
 All groups = 90.4%

% Households with a Cellphone

Waitakere City

European/NZ = 75.8%
 Maori = 76.1%
 Pacific people = 68.4%
 Asian = 74.9%
 All groups = 71.2%



WDHB

European/NZ = 77.6%
 Maori = 77.5%
 Pacific people = 69.8%
 Asian = 75.4%
 All groups = 74.5%

% Households with Internet Access

Waitakere City

European/NZ = 65.2%
 Maori = 46.6%
 Pacific people = 36.6%
 Asian = 73.8%
 All groups = 59.7%



WDHB

European/NZ = 69.1%
 Maori = 51.1%
 Pacific people = 39.0%
 Asian = 78.1%
 All groups = 66.0%

Average Household Size

Waitakere City

European/NZ = 2.65
 Maori = 3.39
 Pacific people = 4.46
 Asian = 3.66
 All groups = 2.97



WDHB

European/NZ = 2.63
 Maori = 3.26
 Pacific people = 4.29
 Asian = 3.65
 All groups = 2.83

% One Parent Households

Waitakere City

European/NZ = 12.0%
 Maori = 26.8%
 Pacific people = 21.4%
 Asian = 9.3%
 All Groups = 13.4%



WDHB

European/NZ = 9.3%
 Maori = 23.4%
 Pacific people = 20.7%
 Asian = 9.6%
 All Groups = 10.5%

% Regular Smokers

Waitakere City

European/NZ = 19.8%
 Maori = 38.5%
 Pacific people = 25.5%
 Asian = 10.2%
 All Groups = 18.9%



WDHB

European/NZ = 16.2%
 Maori = 35.4%
 Pacific people = 25.3%
 Asian = 10.3%
 All Groups = 16.0%